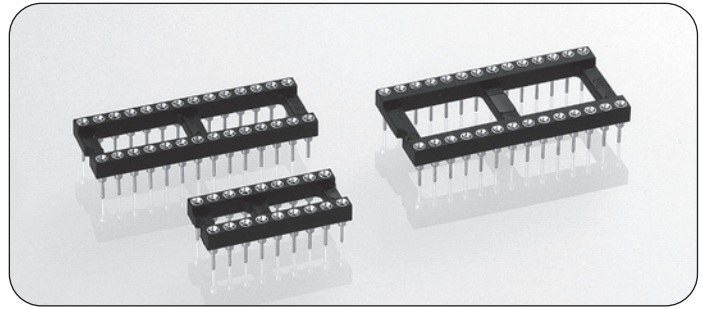


Open frame standard low profile DIL Sockets

Technical Specs:

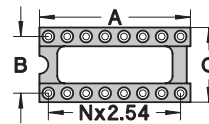
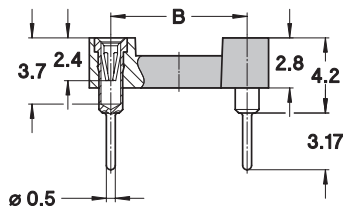
Insulator:	Black glass filled polyester PBT-GF30-FR
Flammability:	UL 94V-O
Sleeve:	Brass CuZn36Pb3 (C36000)
Contact clip (4 finger):	Beryllium copper (C17200)
Accepted pin Ø:	0.40 to 0.56 mm
Forces:	(polished steel gauge Ø 0.43 mm)
- Insertion	2 N typ.
- Withdrawal	1 N typ.
Mechanical life:	min 100 cycles
Rated current:	1 A
Contact resistance:	max 10 mΩ
Dielectric strength:	min 1000 V _{RMS}



Ordering information

PP Plating code	Sleeve	Clip
97	Tin	Gold flash
91	Tin	Gold 0.25 µm
93	Tin	Gold 0.75 µm
99	Tin	Tin

Other plating on request see page 146 for plating specs



No. of poles	A	B	C	See page 100	Order Codes
10	12.6	5.08	7.6	Fig. 1	110-PP-210-41-001001
4	5.0	7.62	10.1	Fig. 2	110-PP-304-41-001001
6	7.6	7.62	10.1	Fig. 3	110-PP-306-41-001001
8	10.1	7.62	10.1	Fig. 4	110-PP-308-41-001001
10	12.6	7.62	10.1	Fig. 5	110-PP-310-41-001001
12	15.2	7.62	10.1	Fig. 6	110-PP-312-41-001001
14	17.7	7.62	10.1	Fig. 7	110-PP-314-41-001001
16	20.3	7.62	10.1	Fig. 8	110-PP-316-41-001001
18*	22.8	7.62	10.1	Fig. 9	110-PP-318-41-001001
20*	25.3	7.62	10.1	Fig. 10	110-PP-320-41-001001
22*	27.8	7.62	10.1	Fig. 11	110-PP-322-41-001001
24*	30.4	7.62	10.1	Fig. 12	110-PP-324-41-001001
28	35.5	7.62	10.1	Fig. 13	110-PP-328-41-001001
20	25.4	10.16	12.6	Fig. 14	110-PP-420-41-001001
22	27.8	10.16	12.6	Fig. 15	110-PP-422-41-001001
24	30.4	10.16	12.6	Fig. 16	110-PP-424-41-001001
28	35.5	10.16	12.6	Fig. 17	110-PP-428-41-001001
32	40.6	10.16	12.6	Fig. 18	110-PP-432-41-001001
10	12.7	15.24	17.7	Fig. 19	110-PP-610-41-001001
24*	30.5	15.24	17.7	Fig. 20	110-PP-624-41-001001
28*	35.5	15.24	17.7	Fig. 21	110-PP-628-41-001001
32*	40.6	15.24	17.7	Fig. 22	110-PP-632-41-001001
36	45.7	15.24	17.7	Fig. 23	110-PP-636-41-001001
40*	50.8	15.24	17.7	Fig. 24	110-PP-640-41-001001
42	53.3	15.24	17.7	Fig. 25	110-PP-642-41-001001
48*	60.9	15.24	17.7	Fig. 26	110-PP-648-41-001001
50	63.5	15.24	17.7	Fig. 27	110-PP-650-41-001001
52	66.0	15.24	17.7	Fig. 28	110-PP-652-41-001001
50	63.5	22.86	25.3	Fig. 29	110-PP-950-41-001001
52	66.0	22.86	25.3	Fig. 30	110-PP-952-41-001001
64	81.2	22.86	25.3	Fig. 31	110-PP-964-41-001001

Options

- 1 Insulators without center bar *
Open frame insulators 318, 320, 322, 324, 624, 628, 632, 640 and 648 available on special request without center bars; add suffix 051 to the part number. Example 110-93-628-41-001001 becomes 110-93-628-41-001051
- 2 Sockets with increased solder tail length of 4.2 mm allowing application on multilayer PCBs up to 3.4 mm thickness replace **110-.....** by **111-.....**
- 3 Sockets with soft brass pin series 110-.....-**005001**, please consult
- 4 For DIL Sockets with closed frame insulators replace **110-...** by **210-...** Please consult for available pin numbers

Due to technical progress, all the information provided is subject to change without prior notice

