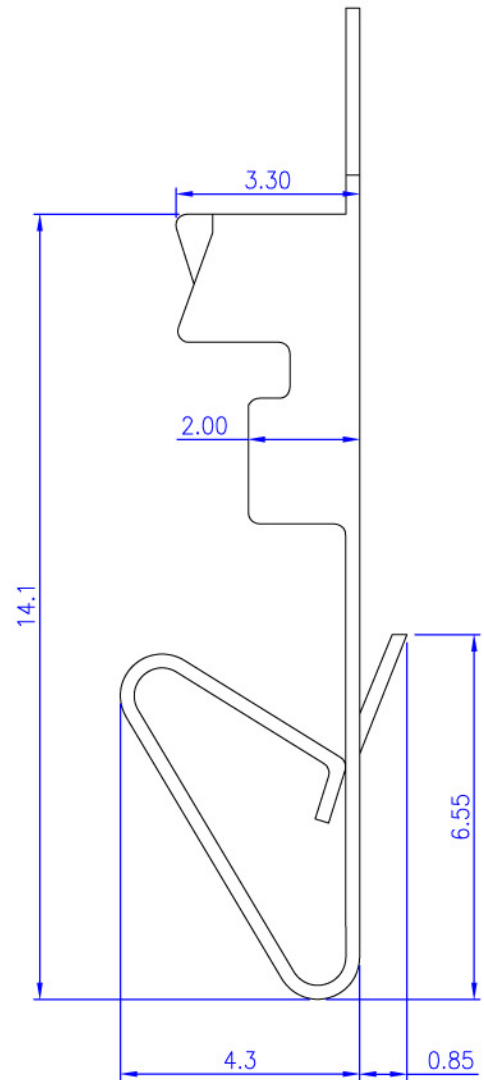
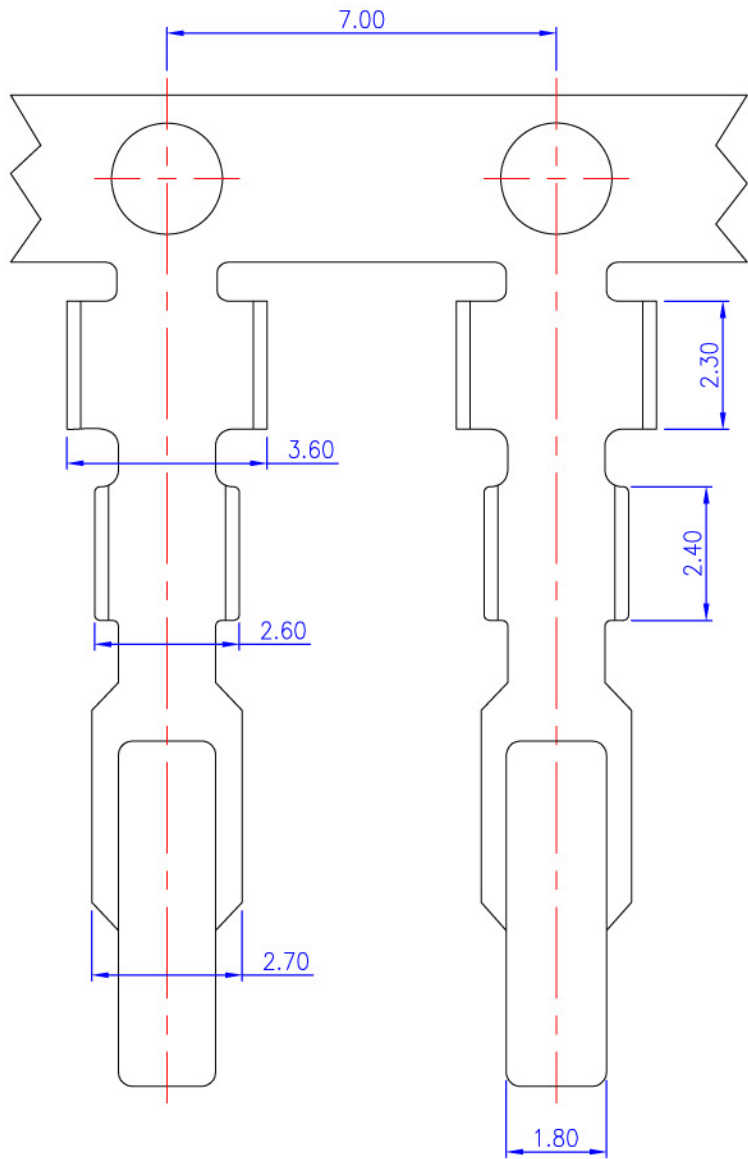


Rev.	Date	Description
A	2004/11/09	New Drawing
B	2005/01/03	Modify Drawing



Material and Finish	Electrical Characteristics	Mechanical Characteristics	Tolerance	Scale	Unit	Drawn By	Checked By	Approved By
1. Terminal: Brass (t=0.25mm), Tin Plating. 2. Wire Range: #18-#24 AWG.	1. Current Rating: 5.0 Amp. Max.. 2. Voltage Rating: 250V AC/DC	1. Operating Temperature: -25°C ~ +85°C	0.0 ±0.30 0.00 ±0.20 0.000 ±0.10	1:1	mm	Sue	Baby	Alex
						Drawing No. HD240201T		
						Title 3.96mm Crimp Terminal		