

IRC series

S10-M

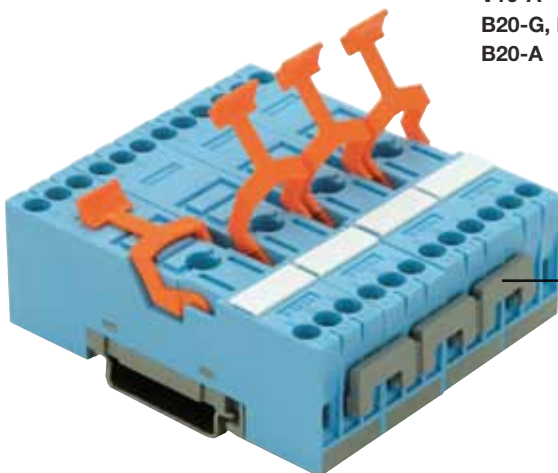
Socket for Interface relay

Type	S10-M I/O socket for IRC relays, 16A Logic connection , 2 x A2
Rated current	16 A
Specifications	
Rated load	16 A/250 V
Insulation	Test voltage V rms/ 1 min
- All terminals/DIN rail	5 kV
Contact / Coil terminals	5 kV
Cross-section of connecting wire	
- Single-wire	4 mm ² or 2 x 2,5 mm ²
- Multi-wire	22 - 14 AWG
Max. screw torque	1,2 Nm
Screw dimensions	M3, Pozi, slot
Integrated retaining clip/plastic	for relay series C10, CSS
Labelling space	detachable
Connection label	1...6; DIN/EN
Mounting	DIN rail TS35 or mounting plate
Ambient temperature operation/storage	-40 (no ice)...60 °C /-40 ... 80 °C

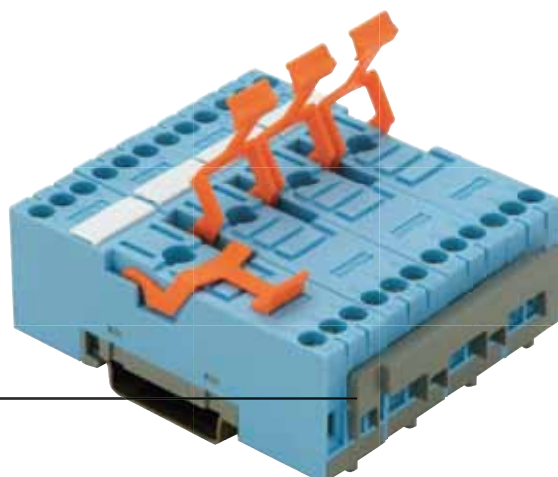
Socket for plug-in 10A IRC relays **C10A, C10G, C10T and CSS**

Accessories
Coil bridge bars

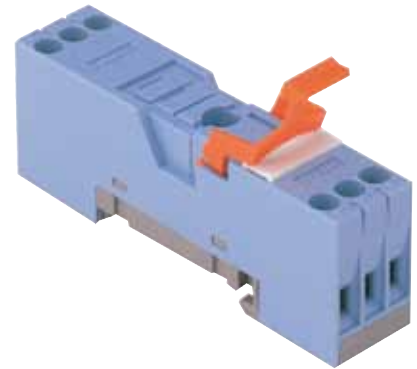
V10-G, V10-E
V10-R
V10-A
B20-G, B20-R
B20-A



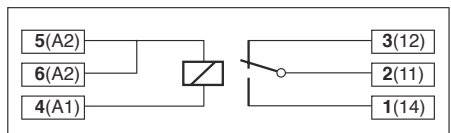
COIL BRIDGE BARS



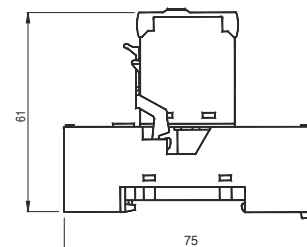
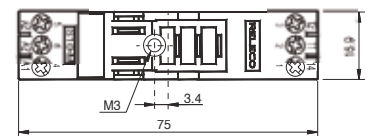
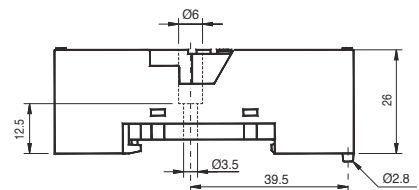
POWER BRIDGE BARS



Connection diagram



Dimensions [mm]



Technical approvals, conformities



IEC 61810 EN 60947