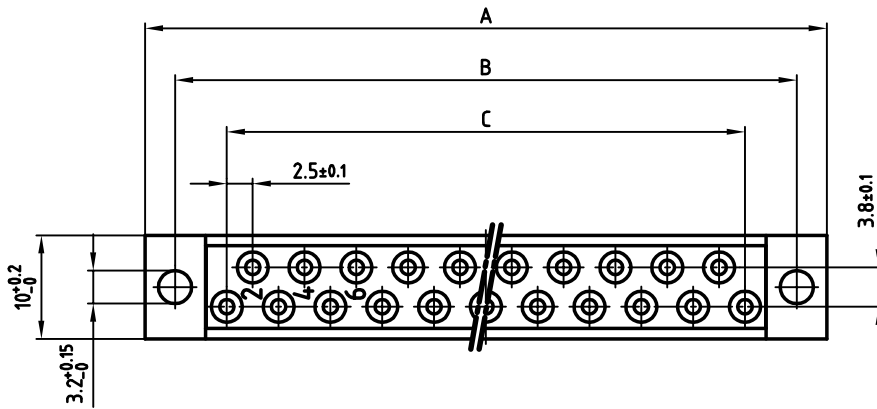
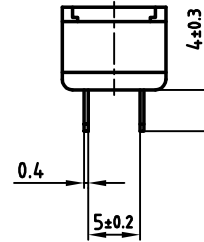
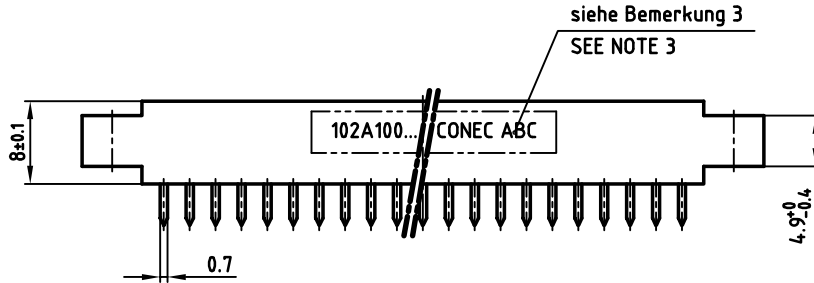
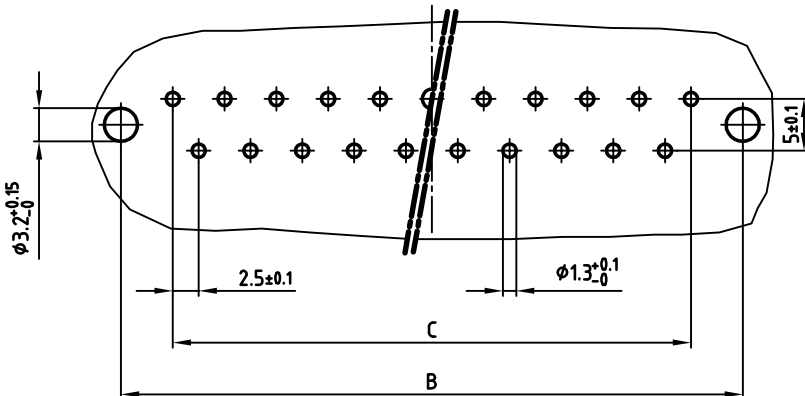


used for: DIN 41617

Art.-Nr. Part-No.	Polzahl No. of pos.	A <sub>-0.3</sub>	B <sub>±0.1</sub>	C <sub>±0.1</sub>
102A10049X	13	45.8	40	12x2.5=30
102A10069X	21	65.8	60	20x2.5=50
102A10089X	31	90.8	85	30x2.5=75



**Leiterplattenbohrbild**  
**P.C.B.-HOLE DRILLINGS** (b)



**Bemerkung:**

1. Isolierkörper: PC GF UL 94 V-0, grau
2. Kontakte: Cu-Legierung  
Veredelung: min. 0.2µm Au über min. 1.27µm Ni
3. Bedruckung: Art.-Nr. CONEC J/WW

**NOTES:**

1. INSULATOR: PC GF UL 94 V-0, GREY
2. CONTACTS: COPPER ALLOY  
PLATING: min. 8µin HARD GOLD over min. 50µin NICKEL
3. CONNECTOR IS PART MARKED: PART-NO. CONEC Y/WW

Directive 2002/95/EC  
„RoHS“  
Compliant

APPROVAL \* FREIGABE \* DEBLOCAGE \* AUTORIZACION \* APPROVAL

CUSTOMER APPROVAL DATE:

NAME: TITLE:

COMPANY NAME:

APPROVAL \* FREIGABE \* DEBLOCAGE \* AUTORIZACION \* APPROVAL

THIS DRAWING MAY NOT BE COPIED OR REPRODUCED IN ANY WAY, AND MAY NOT BE PASSED ON TO A THIRD PARTY, WITHOUT WRITTEN PERMISSION. OWNERSHIP AND COPYRIGHT OF CONEC GmbH DO NOT ALTER CAD DRAWING BY HAND

rev.	description	date	name
1 x b	Ä3723	18.08.2010	K.H.
a	Origin		

tolerance		dim. in mm	
2002	date	name	
drawn	22.11.	Parei	
appd.	22.11.	Kühle	
norm	DIN 41617		
d-old			

scale: 2:1

material: SEE NOTES

title: **FEMALE CONNECTOR**  
13-31pos.  
with straight solder pins

dwg no: AutoCAD 2000 DIN-A  
3 sh: 1/1

part no: **10K1A002**

SEE TABLE