

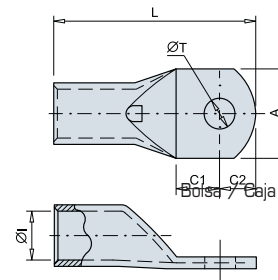
CONEXIONES Y UNIONES PARA CABLE DE COBRE

Mod. T


Terminal de cobre tubular



Los terminales T están fabricados con tubo de cobre electrolítico con un acabado superficial estañado para mejorar el contacto eléctrico. Incorporan agujero de inspección para verificar el correcto posicionamiento del cable. Según norma CEI 61238-1.



RANGO / DIMENSIONES DEL PRODUCTO

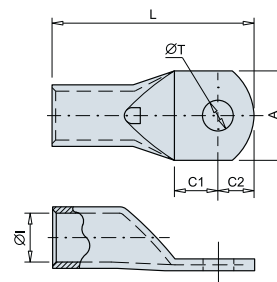
Código	Ref.	Sección		Dimensiones						Kg x 100	
				ØI	L	ØT	A	C1	C2		
010100	T-1,5/4	1,5	4	1,8	18,0	4,3	8,7	5,0	4,0	0,077	100/2000
010110	T-1,5/5		5		18,5	5,3	8,7	5,0	4,5	0,070	100/2000
010120	T-1,5/6		6		20,0	6,4	11,0	6,0	5,0	0,070	100/2000
010130	T-2,5/4	2,5	4	2,7	18,0	4,3	8,7	5,0	4,0	0,121	100/2000
010140	T-2,5/5		5		19,0	5,3	8,7	5,5	4,5	0,118	100/2000
010150	T-2,5/6		6		20,0	6,4	9,0	6,0	5,0	0,111	100/1500
010160	T-2,5/8	8	24,0	8,3	12,0	8,0	7,0	0,111	100/1500		
010170	T-4/4	4	4	3,3	21,0	4,3	8,7	5,0	4,5	0,186	100/1400
010180	T-4/5		5		21,0	5,3	8,7	5,0	4,5	0,174	100/1400
010190	T-4/6		6		23,0	6,4	11,0	6,0	5,5	0,179	100/1000
010200	T-4/8		8		26,5	8,3	14,0	8,0	7,0	0,180	100/1000
010210	T-6/4	6	4	3,8	23,0	4,3	10,3	6,0	5,0	0,233	100/1000
010220	T-6/5		5		23,0	5,3	10,3	6,0	5,0	0,222	100/1000
010230	T-6/6		6		24,0	6,4	10,3	6,0	5,5	0,217	100/1000
010240	T-6/8		8		27,0	8,3	14,0	8,0	7,0	0,217	100/800
010260	T-10/5	10	5	4,7	25,5	5,3	11,9	6,0	5,5	0,391	100/600
010270	T-10/6		6		27,0	6,4	11,9	7,0	6,0	0,397	100/600
010280	T-10/8		8		30,0	8,3	15,0	8,0	8,0	0,407	100/500
010290	T-10/10		10		34,0	10,5	18,0	10,5	9,5	0,413	100/500
010310	T-16/5	16	5	5,6	26,5	5,3	11,9	6,0	5,0	0,505	100/500
010320	T-16/6		6		28,5	6,4	11,9	7,0	6,0	0,526	100/500
010330	T-16/8		8		31,0	8,3	15,0	8,0	7,5	0,535	100/400
010340	T-16/10		10		34,5	10,5	18,0	10,0	9,0	0,543	100/400
010350	T-16/12	12	38,5	13,0	20,0	12,0	11,0	0,535	100/300		
010360	T-25/6	25	6	7,1	31,0	6,4	13,5	7,0	6,0	0,759	50/600
010370	T-25/8		8		34,0	8,3	15,0	8,5	7,5	0,794	50/600
010380	T-25/10		10		39,0	10,5	18,0	11,0	10,0	0,860	50/500
010390	T-25/12		12		41,0	13,0	21,0	12,0	11,0	0,819	50/500
010410	T-35/6	35	6	8,7	34,0	6,4	15,7	7,0	6,0	1,165	50/400
010420	T-35/8		8		38,0	8,3	15,7	9,0	8,0	1,260	50/400
010430	T-35/10		10		42,0	10,5	19,0	11,0	10,0	1,331	50/350
010440	T-35/12		12		44,0	13,0	21,0	12,0	11,0	1,296	50/300
010450	T-35/14		14		48,0	14,5	21,0	14,0	13,0	1,367	50/300
010500	T-50/6		50		6	9,8	41,0	6,4	17,9	8,0	7,0
010510	T-50/8	8		43,0	8,3		17,9	9,0	8,0	1,756	20/240
010520	T-50/10	10		47,0	10,5		20,0	11,0	10,0	1,851	20/200
010530	T-50/12	12		51,0	13,0		21,0	13,0	12,0	1,912	20/200
010540	T-50/14	14		53,0	14,5		25,0	14,0	13,0	1,918	20/200
010550	T-50/16	16		55,0	16,5		26,0	15,0	14,0	1,885	20/120

Mod. T
Terminal de cobre tubular


Los terminales T están fabricados con tubo de cobre electrolítico con un acabado superficial estañado para mejorar el contacto eléctrico.

Incorporan agujero de inspección para verificar el correcto posicionamiento del cable.

Según norma CEI 61238-1.



Código	Ref.	Sección		Dimensiones						Kg x 100	Bolsa / Caja
				ØI	L	ØT	A	C1	C2		
010570	T-70/8	70	8	11,5	47,0	8,3	21,5	9,0	8,0	2,609	20/160
010580	T-70/10		10		51,0	10,5	21,5	11,0	10,0	2,751	20/160
010590	T-70/12		12		53,0	13,0	21,5	12,0	11,0	2,737	20/160
010600	T-70/14		14		58,0	14,5	25,0	15,0	13,0	2,939	20/120
010610	T-70/16		16		59,0	16,5	26,0	15,0	14,0	2,858	20/120
010630	T-95/8	95	8	13,5	52,0	8,3	24,7	10,0	9,0	3,605	20/120
010640	T-95/10		10		55,0	10,5	24,7	11,0	11,0	3,724	20/120
010650	T-95/12		12		57,0	13,0	24,7	12,0	12,0	3,729	20/120
010660	T-95/14		14		61,0	14,5	24,7	15,0	13,0	3,921	20/100
010670	T-95/16		16		64,0	16,5	27,0	16,0	15,0	3,990	20/100
010690	T-120/8	120	8	15,6	56,0	8,3	28,9	10,0	9,0	5,788	10/80
010700	T-120/10		10		58,0	10,5	28,9	11,0	10,0	5,877	10/80
010710	T-120/12		12		63,0	13,0	28,9	14,0	12,0	6,235	10/80
010720	T-120/14		14		67,0	14,5	28,9	16,0	14,0	6,539	10/80
010730	T-120/16		16		71,0	16,5	28,9	17,0	16,0	6,780	10/80
010750	T-150/10	150	10	16,5	69,0	10,5	30,4	13,0	11,0	7,623	10/60
010760	T-150/12		12		75,0	13,0	30,4	16,0	14,0	8,134	10/60
010770	T-150/14		14		79,0	14,5	30,4	18,0	16,0	8,469	10/60
010780	T-150/16		16		79,0	16,5	30,4	18,0	16,0	8,277	10/60
010800	T-185/10		185		10	18,8	74,0	10,5	34,0	13,0	11,0
010810	T-185/12	12		80,0	13,0		34,0	16,0	14,0	11,104	10/40
010820	T-185/14	14		84,0	14,5		34,0	18,0	16,0	11,546	10/40
010830	T-185/16	16		85,0	16,5		34,0	18,0	17,0	11,479	10/40
010850	T-240/10	240		10	21,2		82,0	10,5	38,4	14,0	12,0
010860	T-240/12		12	86,0		13,0	38,4	16,0	14,0	13,702	5/40
010870	T-240/14		14	90,0		14,5	38,4	18,0	16,0	14,222	5/40
010880	T-240/16		16	91,0		16,5	38,4	18,0	17,0	14,171	5/40
010900	T-300/12		300	12		23,4	93,0	13,0	41,7	16,0	14,0
010910	T-300/14	14		94,0	14,5		41,7	16,0	15,0	17,249	5/30
010920	T-300/16	16		100,0	16,5		41,7	19,0	18,0	18,161	5/30
010940	T-400/12	400	12	26,8	110,0	13,0	47,8	21,0	19,0	26,866	5/15
010945	T-400/16		16		110,0	16,5	47,8	21,0	19,0	26,610	5/15
010950	T-400/20		20		116,0	21,0	47,8	24,0	22,0	26,442	5/15
010960	T-500/16	500	16	29,8	115,0	16,5	54,8	22,0	19,0	45,663	1/10
010980	T-500/20		20		120,0	21,0	54,8	24,0	22,0	46,702	1/10
010985	T-630/16	630	16	34,5	128,0	16,5	64,4	22,0	19,0	70,573	1/8
010990	T-630/20		20		134,0	21,0	64,4	24,0	23,0	72,766	1/8