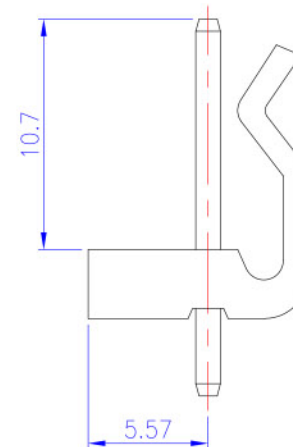
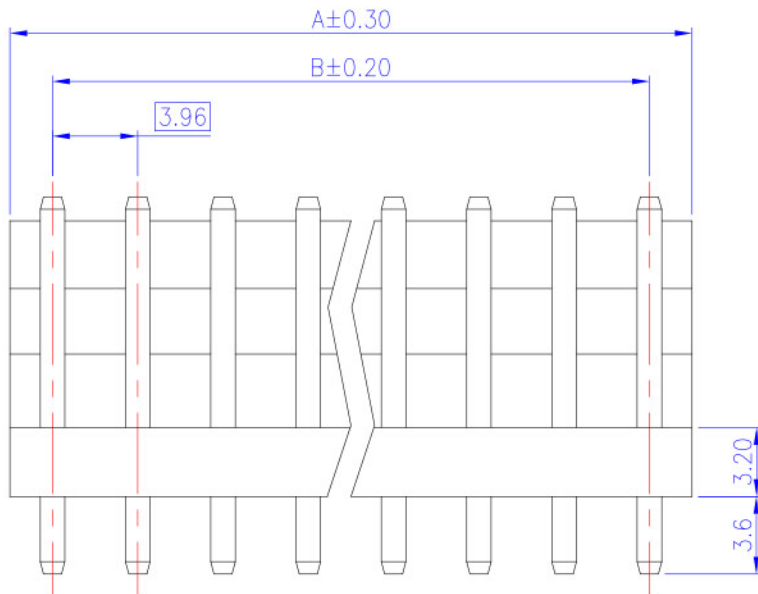
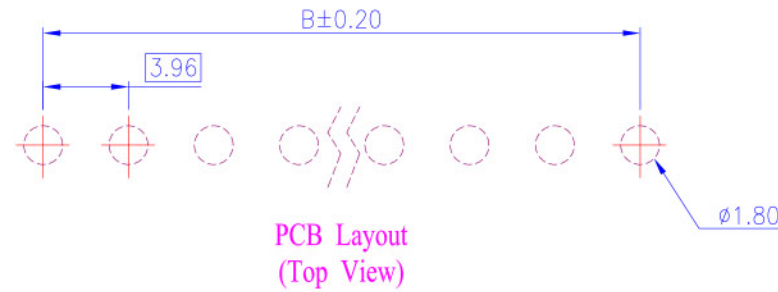
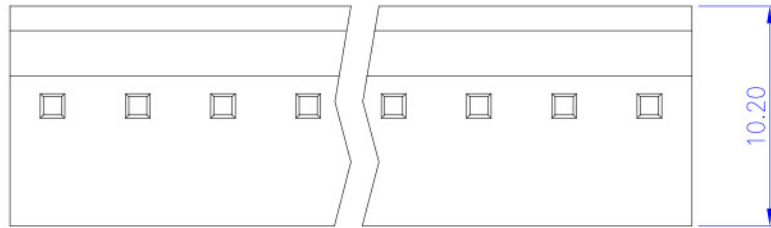


Rev.	Date	Description
A	2004/11/09	New Drawing
B	2006/10/23	Modify Drawing
C	2008/08/14	Modify Dimensions



Order Information	Dimensions		
	Pos.	A	B
240201V02	2	7.92	3.96
240201V03	3	11.88	7.92
240201V04	4	15.84	11.88
240201V05	5	19.80	15.84
240201V06	6	23.76	19.80
240201V07	7	27.72	23.76
240201V08	8	31.68	27.72
240201V09	9	35.64	31.68
240201V10	10	39.60	35.64
240201V11	11	43.56	39.60
240201V12	12	47.52	43.56
240201V13	13	51.48	47.52
240201V14	14	55.44	51.48

Tolerance	Scale	Unit	Drawn By	Checked By	Approval By
0.0 ±0.30	1:1	mm			
0.00 ±0.20					
0.000 ±0.10					
Drawing No. HD240201V					
Title Wafer Connector 3.96mm Pitch P.C.B Mount Vertical					

Material and Finish

- Housing: Thermoplastic (UL94V-2), White.
- Terminal: Sq. 1.14mm Copper Alloy, Tin Plating.

Electrical Characteristics

- Current Rating: 5.0 Amp. Max.
- Dielectric Withstand Voltage: 1000V AC RMS for 60Seconds.
- Insulation Resistance: 1000M Ohms Min. at 1000V DC.

Mechanical Characteristics

- Operating Temperature: -25°C ~ +85°C