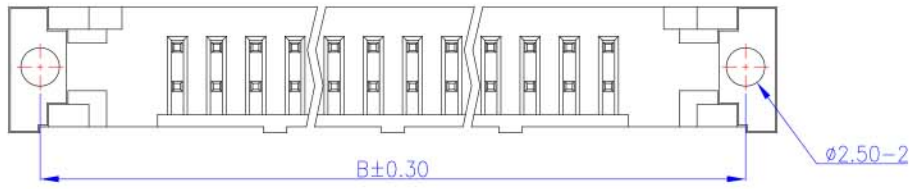
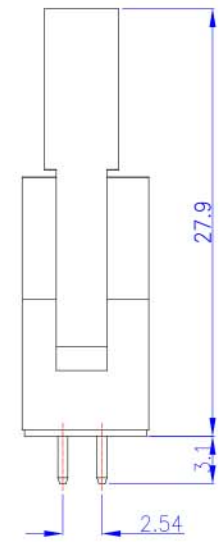
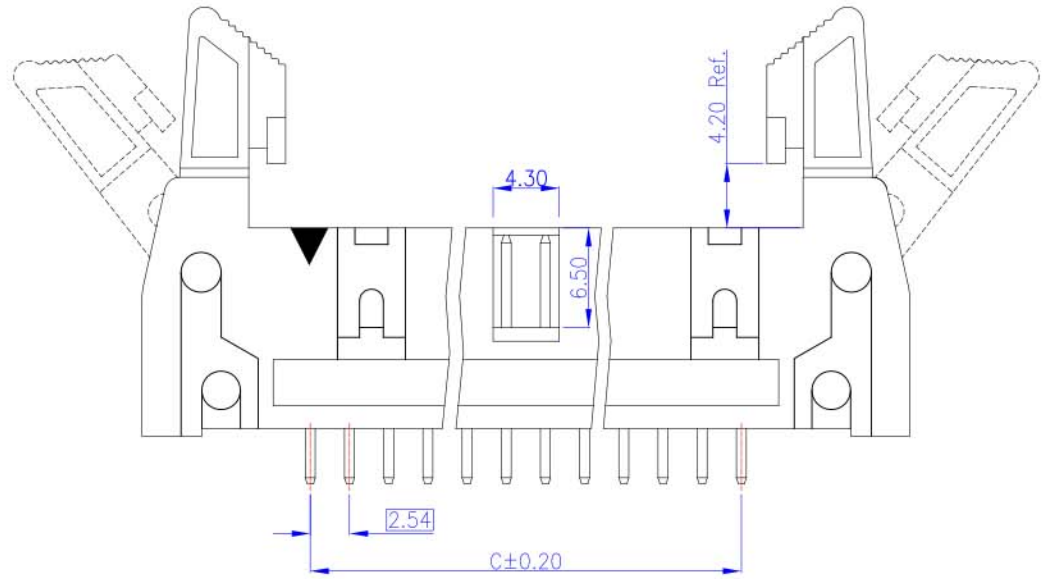
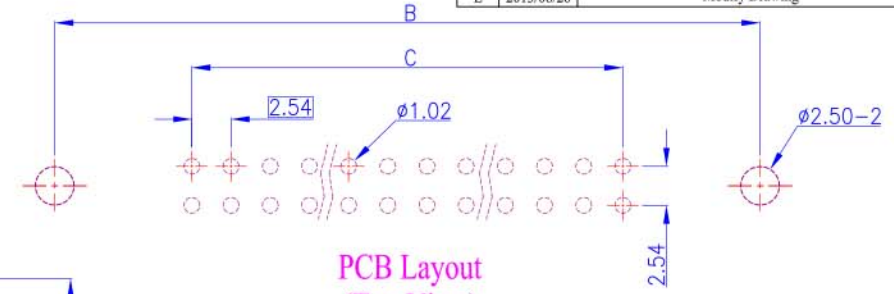


Rev.	Date	Description
A	2005/12/17	New Drawing
B	2005/04/25	Modify Drawing
C	2006/07/05	Modify Drawing
D	2013/05/23	Modify Drawing
E	2013/08/26	Modify Drawing



Order Information	Dimensions			
	Pos.	A	B	C
2203013-00205	10	32.00	27.94	10.16
2203013-00206	12	34.54	30.48	12.70
2203013-00207	14	37.08	33.02	15.24
2203013-00208	16	39.62	35.56	17.78
2203013-00210	20	44.70	40.64	22.86
2203013-00212	24	49.78	45.72	27.94
2203013-00213	26	52.32	48.26	30.48
2203013-00215	30	57.40	53.34	35.56
2203013-00217	34	62.48	58.42	40.64
2203013-00220	40	70.10	66.04	48.26
2203013-00225	50	82.80	78.74	60.96

Material and Finish	Electrical Characteristics	Mechanical Characteristics	Tolerance	Scale	Unit	Drawn By	Checked By	Approved By
1. Housing: PBT (UL94V-0), Black. 2. Terminal: Sq. 0.64mm Copper Alloy, Gold Plating.	1. Current Rating: 3.0 Amp. Max. 2. Dielectric Withstand Voltage: 1000V AC RMS for 60Seconds. 3. Insulation Resistance: 1000M Ohms Min. at 1000V DC.	1. Operating Temperature: -55°C ~ +105°C	0.0 ±0.30 0.00 ±0.20 0.000 ±0.10	1:1 	mm			
			Title: 2.54mm Box Header Ejector Type PCB Mount Vertical With Short Latch Drawing No. HD2203013					