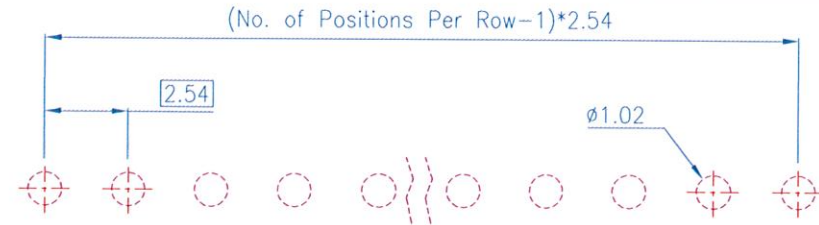
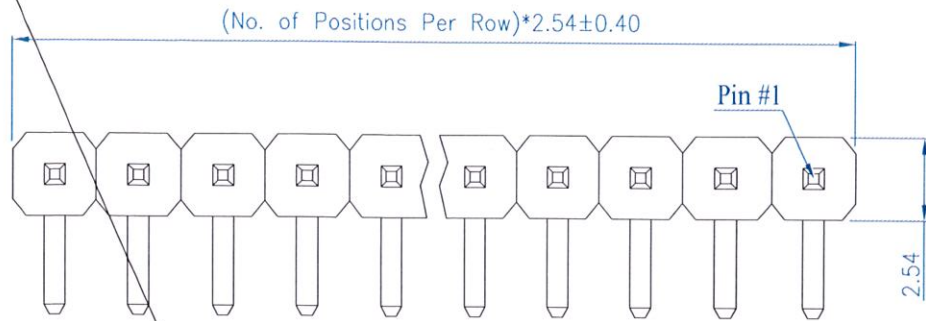
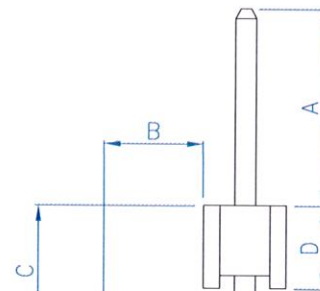
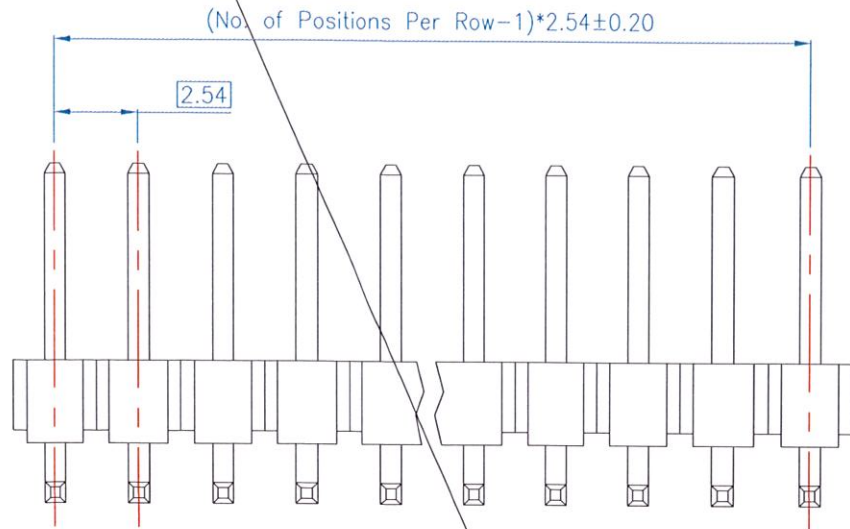


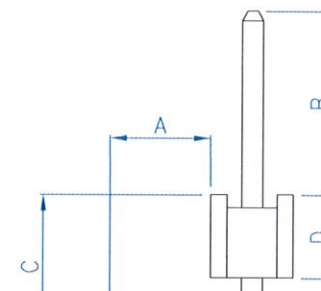
Rev.	Date	Description
A	2004/12/23	New Drawing
B	2006/11/13	Modify Drawing
C	2007/03/19	Modify Drawing
D	2007/04/13	Modify P/N
E	2010/09/02	Add Terminal Plating Options
F	2012/12/04	Add Terminal Plating Options



PCB Layout
(Top View)



Standard Housing



Reverse Housing

Order Information

2304 *** - ** 1 **

Length Options
(Ref. Draw No. HD2304-001)

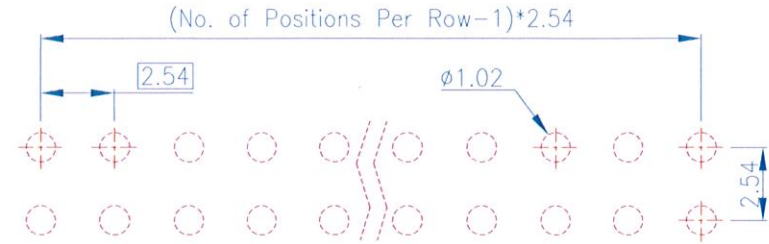
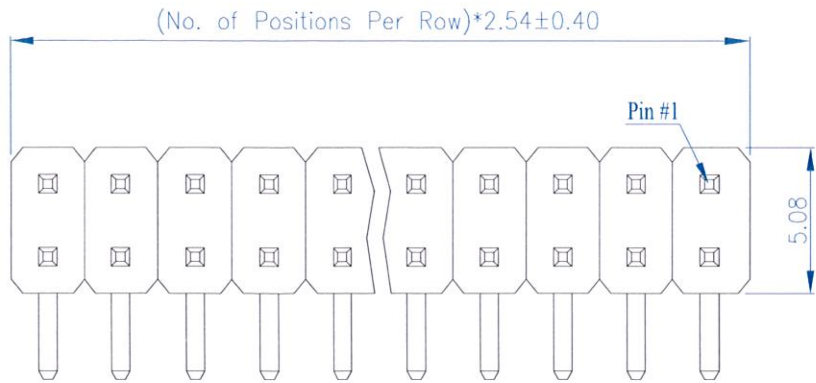
Housing Option
H : Nylon 6T
Blank : PBT

Terminal Plating Options
00: Gold Flash
30: 10u" Gold
40: 15u" Gold
31: 10u" Gold on contact area
Tin plated on solder tail
T: Tin

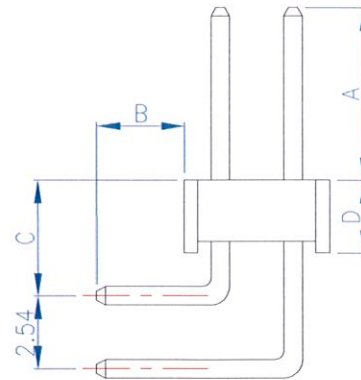
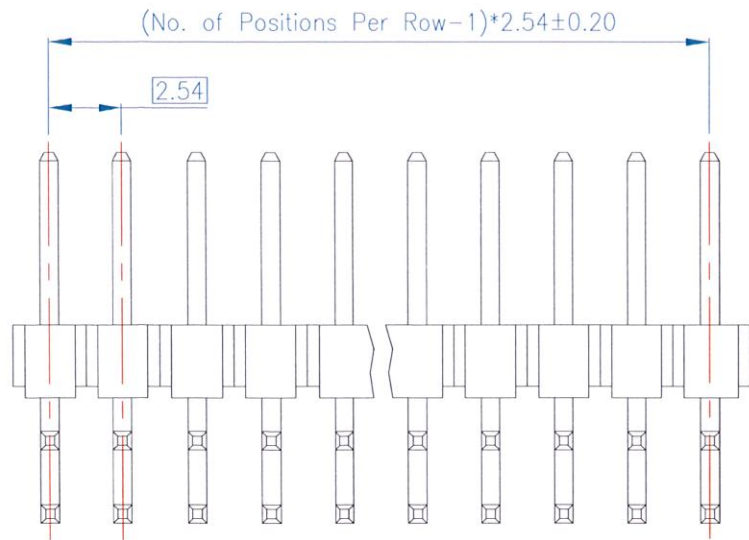
No. of Positions Per Row

Material and Finish	Electrical Characteristics	Mechanical Characteristics	Tolerance	Scale	Unit	Drawn By	Checked By	Approved By
1. Housing: Thermoplastic (UL94V-0), Black. 2. Terminal: Sq. 0.64mm Copper Alloy, Gold Plating.	1. Current Rating: 3.0 Amp. Max.. 2. Dielectric Withstand Voltage: 1000V AC RMS for 60Seconds. 3. Insulation Resistance: 1000M Ohms Min. at 1000V DC.	1. Operating Temperature: -55°C ~ +105°C	0.0 ±0.30 0.00 ±0.20 0.000 ±0.10	1:1	mm			
			Drawing No. HD2304-101		Title 2.54mm Post Header PCB Mount Right Angle Type Single Row			

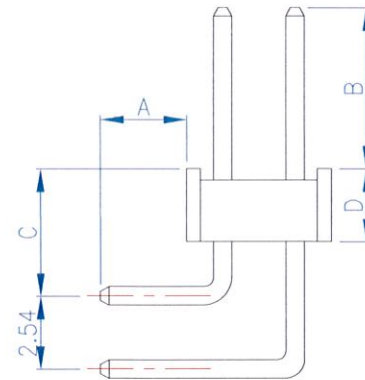
Rev.	Date	Description
A	2005/06/29	New Drawing
B	2006/11/13	Modify Drawing
C	2007/03/19	Modify Drawing
D	2007/04/13	Modify P/N



PCB Layout
(Top View)



Standard Housing



Reverse Housing

Order Information

2304 ** * - ** 2 **

Length Options _____
(Ref. Draw No. HD2304-001)

Housing Option
H : Nylon 6T
Blank : PBT

Terminal Plating Options
00: Gold Flash
30: 10u" Gold
40: 15u" Gold

No. of Positions Per Row _____

Material and Finish

1. Housing: Thermoplastic (UL94V-0), Black.
. Terminal: Sq. 0.64mm Copper Alloy, Gold Plating.

Electrical Characteristics

1. Current Rating: 3.0 Amp. Max.
2. Dielectric Withstand Voltage:
1000V AC RMS for 60Seconds.
3. Insulation Resistance:
1000M Ohms Min. at 1000V DC.

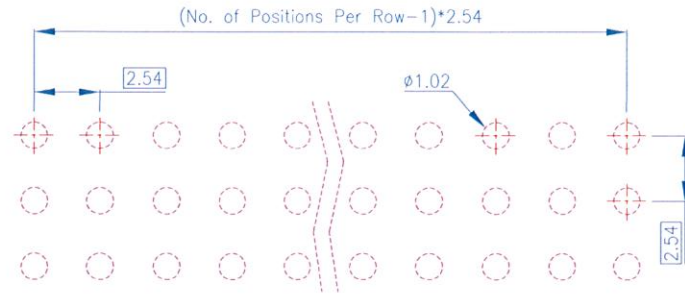
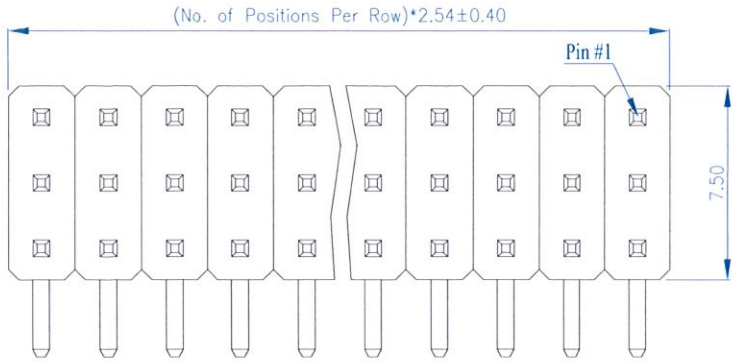
Mechanical Characteristics

1. Operating Temperature: -55°C ~ +105°C

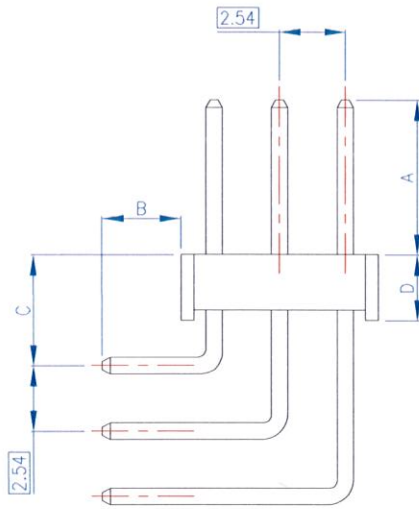
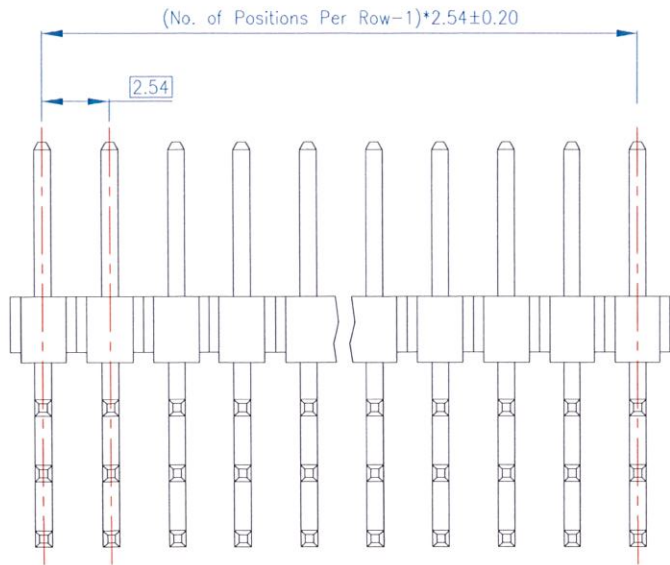
Tolerance	Scale	Unit	Drawn By	Checked By	Approved By
0.0 ±0.30	1:1	mm			
0.00 ±0.20					
0.000 ±0.10					
Title			Drawing No. HD2304-201		

2.54mm Post Header
PCB Mount Right Angle Type
Dual Rows

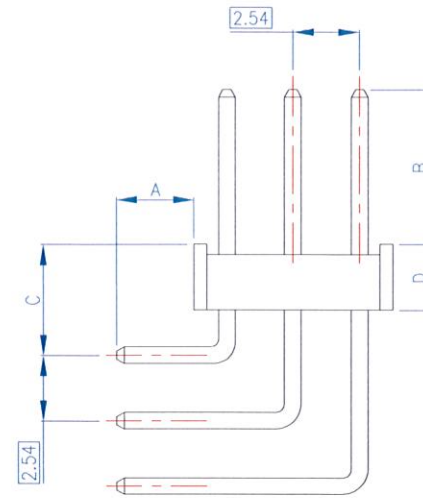
Rev.	Date	Description
A	2004/12/23	New Drawing
B	2006/11/13	Modify Drawing
C	2007/03/19	Modify Drawing
D	2007/04/13	Modify P/N



PCB Layout
(Top View)



Standard Housing



Reverse Housing

Order Information

2304 ** * - ** 3 **

Length Options
(Ref. Draw No. HD2304-001)

Housing Option
H : Nylon 6T
Blank : PBT

Terminal Plating Options
00: Gold Flash
30: 10u" Gold
40: 15u" Gold

No. of Positions Per Row

Material and Finish

- Housing: Termoplastic (UL94-V0), Black.
- Terminal: Sq. 0.64mm Copper Alloy, Gold Plating.

Electrical Characteristics

- Current Rating: 3.0 Amp. Max..
- Dielectric Withstand Voltage:
1000V AC RMS for 60Seconds.
- Insulation Resistance:
1000M Ohms Min. at 1000V DC.

Mechanical Characteristics

- Operating Temperature: -55°C ~ +105°C

Tolerance	Scale	Unit	Drawn By	Checked By	Approved By
0.0 ±0.30	1:1	mm			
0.00 ±0.20					
0.000 ±0.10					
File			Drawing No. HD2304-301		

2.54mm Post Header
PCB Mount Right Angle Type
Triple Rows

for Draw No.: *HD2304-101, HD2304-201, HD2304-301*

Code	A	B	C	D	Date	Note	Code	A	B	C	D	Date	Note
01	6.00	3.00	4.04	2.54	Dec. 28, 2004		26	12.00	3.00	6.00	2.54	Mar. 09, 2007	Reverse Housing
02	6.00	3.00	6.00	2.54	Dec. 28, 2004	Reverse Housing	27	7.00	3.50	4.06	2.54	May 10, 2007	
03	4.50	3.00	4.48	2.54	Dec. 28, 2004	Reverse Housing	28	7.90	2.90	6.00	2.54	May 15, 2007	Reverse Housing
04	6.00	2.88	3.94	2.54	Dec. 28, 2004		29	6.00	3.00	4.52	2.54	Aug. 07, 2007	Reverse Housing
05	5.73	3.50	6.20	2.54	Dec. 28, 2004	Reverse Housing	30	6.00	3.00	3.90	2.54	Dec. 26, 2007	
06	7.00	9.00	4.04	2.54	Dec. 28, 2004		31	3.50	3.00	4.04	2.54	Dec. 26, 2007	
07	7.00	4.00	4.04	2.54	Dec. 28, 2004		32	6.00	3.00	6.20	2.54	Dec. 26, 2007	Reverse Housing
08	3.00	3.00	4.04	2.54	Dec. 28, 2004		33	7.00	3.80	3.68	2.54	May. 06, 2008	
09	6.00	3.00	4.80	2.54	Dec. 28, 2004	Reverse Housing	34	4.00	3.00	2.98	2.54	Jul. 11, 2008	Reverse Housing
10	6.90	3.50	3.66	2.54	Mar. 08, 2005	Reverse Housing	35	3.90	3.40	3.45	2.54	Jul. 22, 2008	
11	4.00	3.40	4.22	2.54	Jan. 31, 2008	Rev. B	36	6.00	3.20	4.40	2.54	Oct. 31, 2008	
12	6.00	2.90	3.62	2.54	Mar. 08, 2005		37	7.00	3.00	6.54	2.54	Dec. 25, 2008	
13	Refer to Drawing No. 230413				Jun. 29, 2005		38	5.50	3.00	4.04	2.54	Oct. 02, 2009	
14	6.20	3.00	5.50	2.54	Apr. 21, 2006		39	6.00	2.75	4.25	2.54	Oct. 14, 2009	
15	6.10	3.10	3.90	2.54	Apr. 21, 2006		40	8.64	5.01	5.04	2.54	Oct. 26, 2009	
16	4.80	3.30	3.90	2.54	Jul. 17, 2006		41	3.00	3.60	3.32	2.54	Oct. 31, 2009	Reverse Housing
17	6.00	3.50	4.06	2.54	Sep. 05, 2006		42	14.50	3.00	3.18	2.54	Nov. 17, 2009	Reverse Housing
18	6.00	3.00	6.24	2.54	Sep. 27, 2006	Reverse Housing	43	4.00	3.00	4.04	2.54	Nov. 24, 2009	Reverse Housing
19	3.30	3.10	6.58	2.54	Nov. 20, 2006		44	6.00	3.00	4.54	2.54	Dec. 08, 2009	
20	3.00	7.00	4.04	2.54	Nov. 23, 2006		45	6.00	6.00	3.30	2.54	Dec. 17, 2009	
21	6.00	3.10	6.00	2.54	Nov. 05, 2006		46	3.00	6.00	5.68	2.54	Feb. 24, 2010	
22	6.00	10.00	4.04	2.54	Dec. 05, 2006		47	6.50	10.41	5.98	2.54	Mar. 26, 2010	
23	6.00	3.00	4.04	2.54	Feb. 09, 2007	Reverse Housing	48	6.00	7.20	4.24	2.54	May. 27, 2010	
24	3.00	6.00	6.04	2.54	Feb. 13, 2007		49	7.00	3.00	4.04	2.54	Jul. 20, 2010	
25	5.84	3.00	4.04	2.54	Feb. 14, 2007		50	8.13	2.54	4.04	2.54	Dec. 01, 2010	

	Material and Finish	Electrical Characteristics	Mechanical Characteristics	Tolerance 0.0 ±0.30 0.00 ±0.20 0.000 ±0.10	Scale 1:1 	Drawn By _____	Checked By _____	Approved By _____
				Drawing No. HD2304-001 Title Length Options 2.54mm Post Header PCB Mount Right Angle				

for Draw No.: *HD2304-101, HD2304-201, HD2304-301*

Code	A	B	C	D	Date	Note	Code	A	B	C	D	Date	Note
51	6.00	3.00	7.54	2.54	Dec. 17, 2010		76						
52	3.05	3.05	4.06	2.54	Dec. 22, 2010		77						
53	3.50	3.10	4.10	2.54	Feb. 22, 2011		78						
54	3.56	3.18	6.35	2.54	Mar. 04, 2011		79						
55	4.00	3.00	3.54	2.54	Mar. 16, 2011		80						
56	7.00	3.40	4.54	2.54	Apr. 29, 2011		81						
57	5.60	3.00	6.50	2.54	May. 10, 2011	Reverse Housing	82						
58	5.84	3.40	3.77	2.54	Jun. 03, 2011		83						
59	3.15	6.44	2.86	2.54	Jun. 03, 2011	Reverse Housing	84						
60	5.50	3.14	7.10	2.54	Nov. 16, 2011	Reverse Housing	85						
61	5.84	2.30	4.04	2.54	Nov. 17, 2011		86						
62	6.00	6.00	4.00	2.54	Apr. 24, 2012		87						
63	4.10	6.50	3.54	2.54	May. 30, 2012	Reverse Housing	88						
64	10.81	7.90	4.04	2.54	Nov. 29, 2012	Reverse Housing	89						
65	4.00	4.00	4.04	2.54	Dec. 04, 2012		90						
66	7.12	3.00	3.48	2.54	Jan. 02, 2013		91						
67	3.00	8.00	3.18	2.54	Mar. 06, 2013		92						
68	4.00	4.00	2.86	2.54	Apr. 18, 2013		93						
69	6.00	3.10	4.18	2.54	Apr. 26, 2013		94						
70	8.00	3.00	4.04	2.54	Nov. 13, 2013		95						
71	8.00	6.00	7.58	2.54	Nov. 13, 2013		96						
72							97						
73							98						
74							99						
75							100						

	Material and Finish	Electrical Characteristics	Mechanical Characteristics	Tolerance	Scale	Unit	Drawn By	Checked By	Approved By
				0.0 ±0.30 0.00 ±0.20 0.000 ±0.10	1:1	mm			
				Drawing No. HD2304-002					
				Title Length Options 2.54mm Post Header PCB Mount Right Angle					