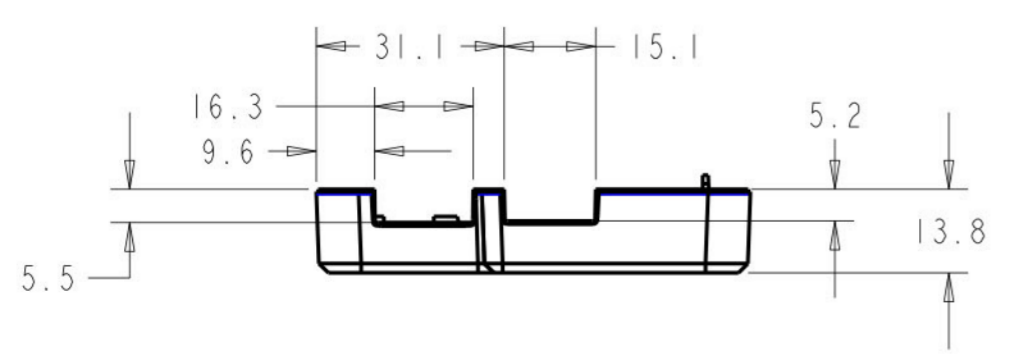
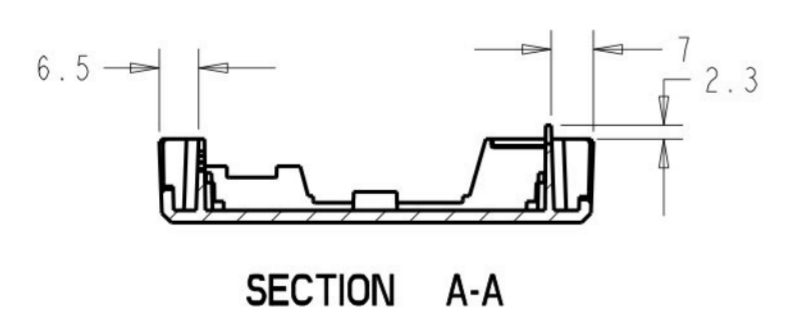
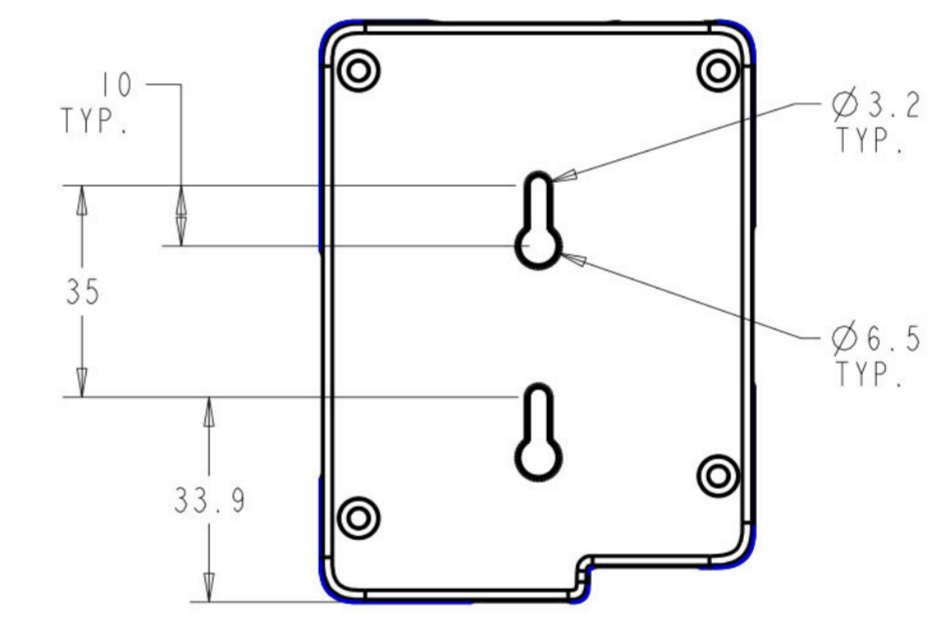
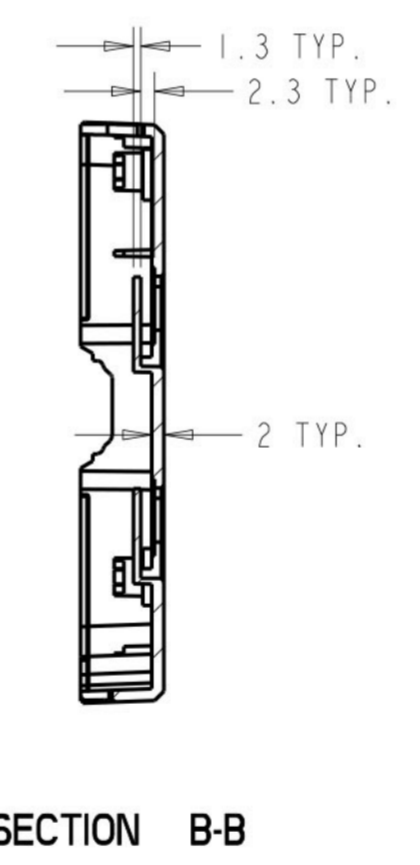
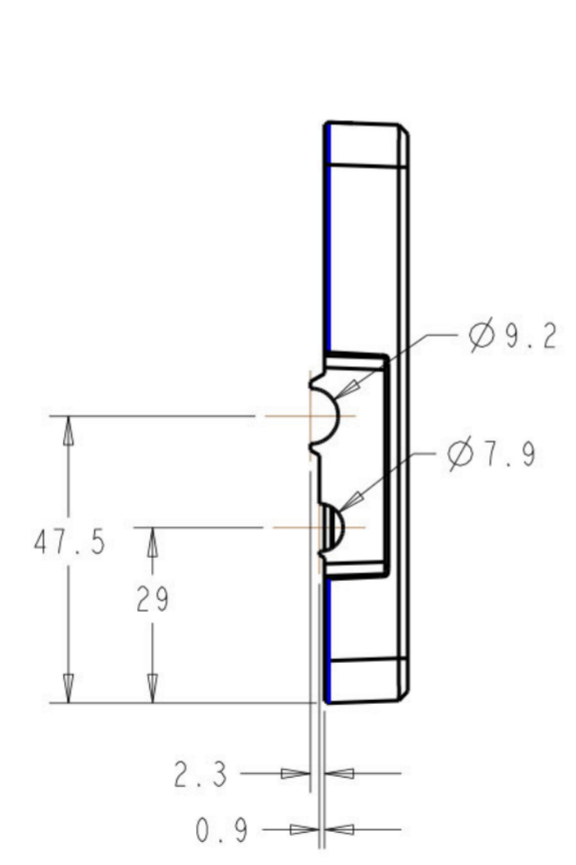
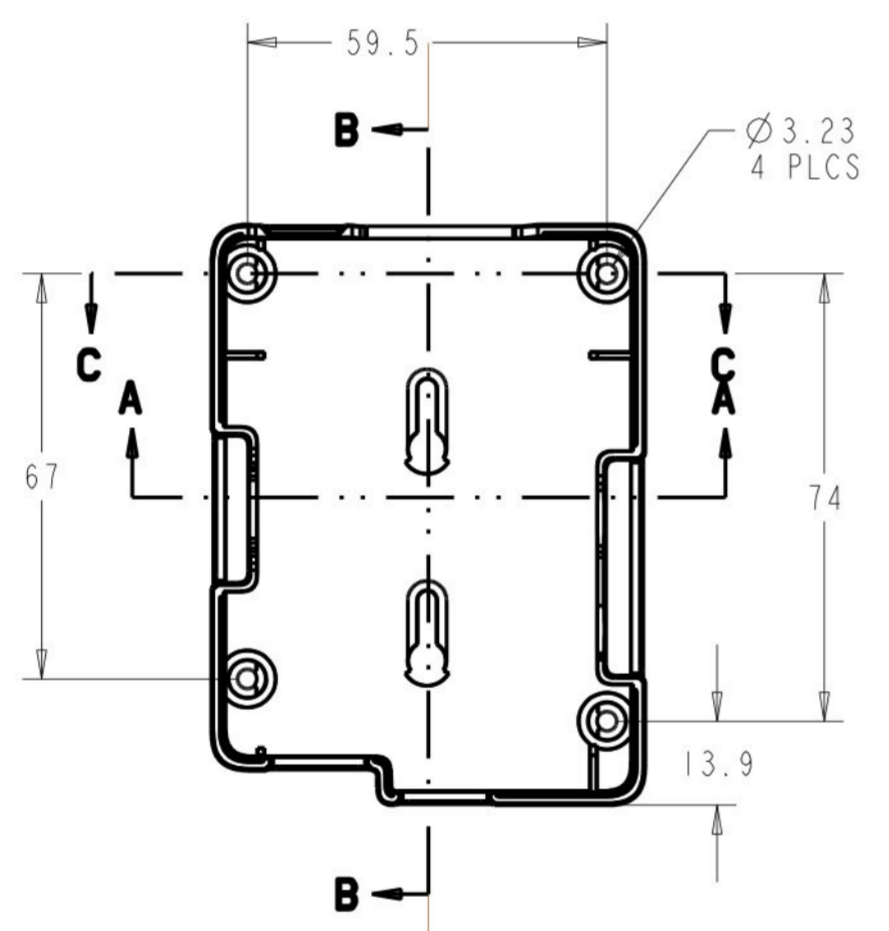
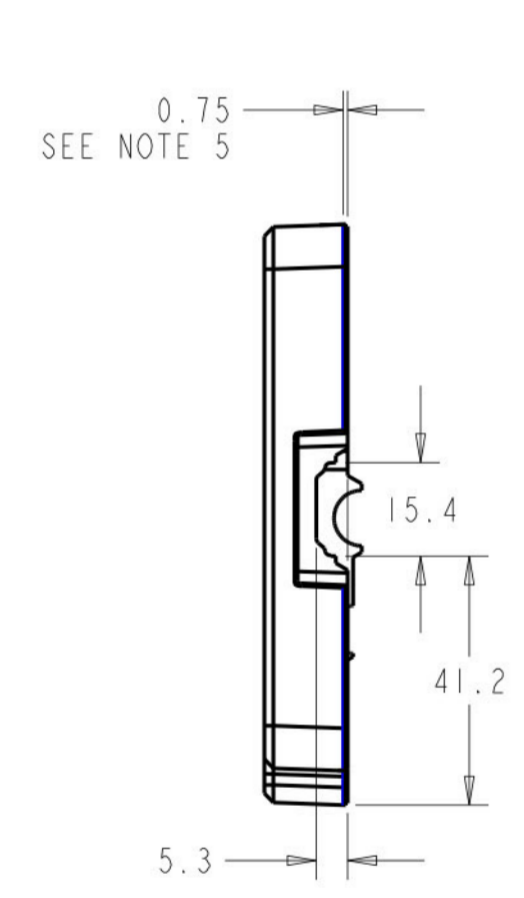
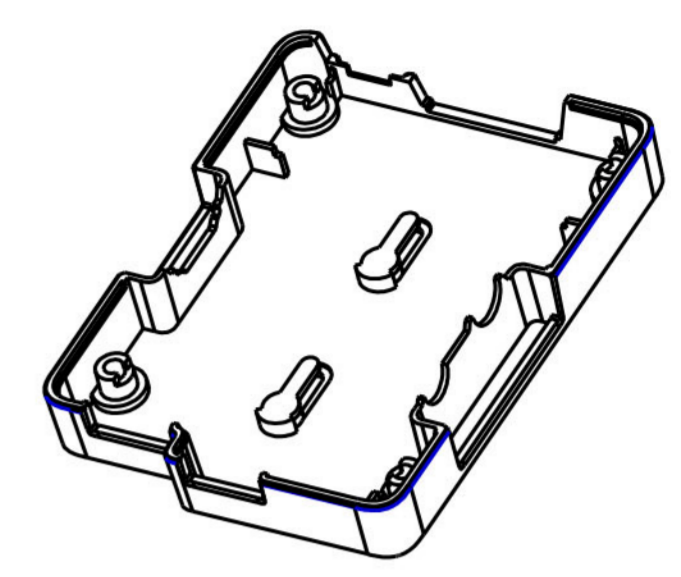
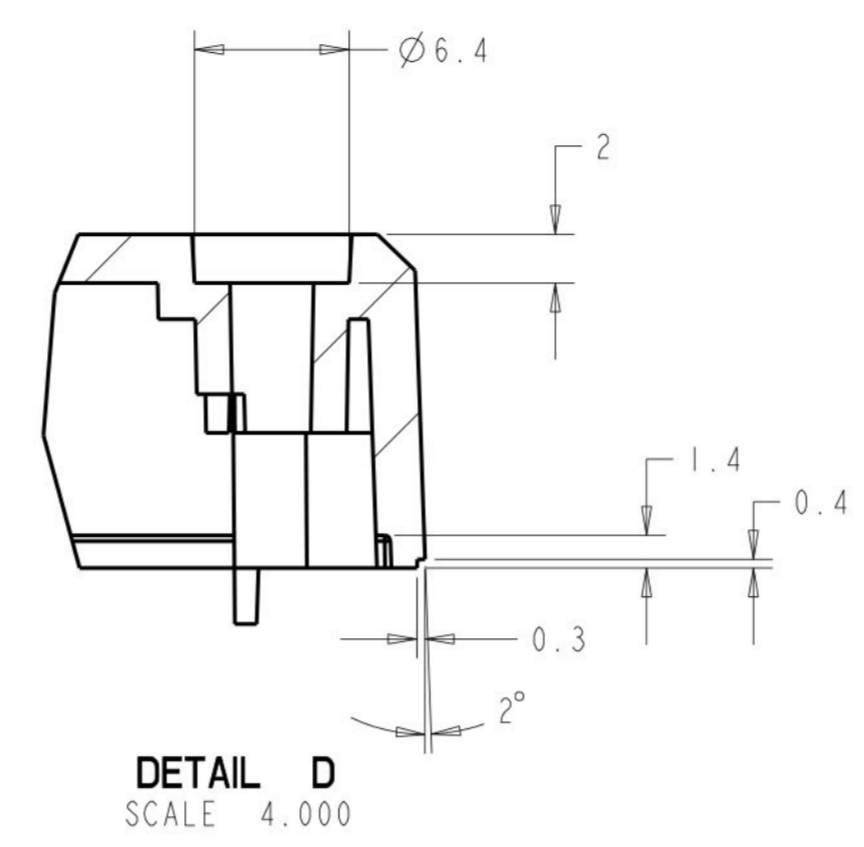
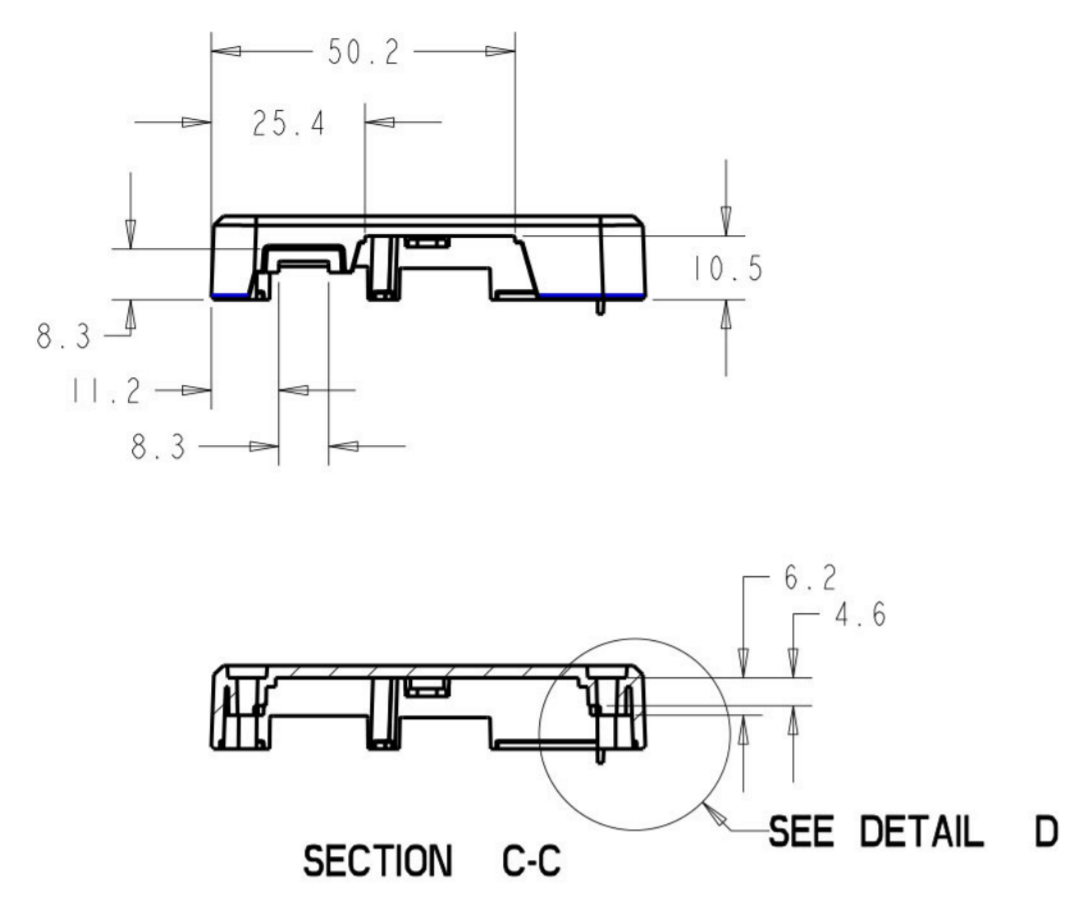


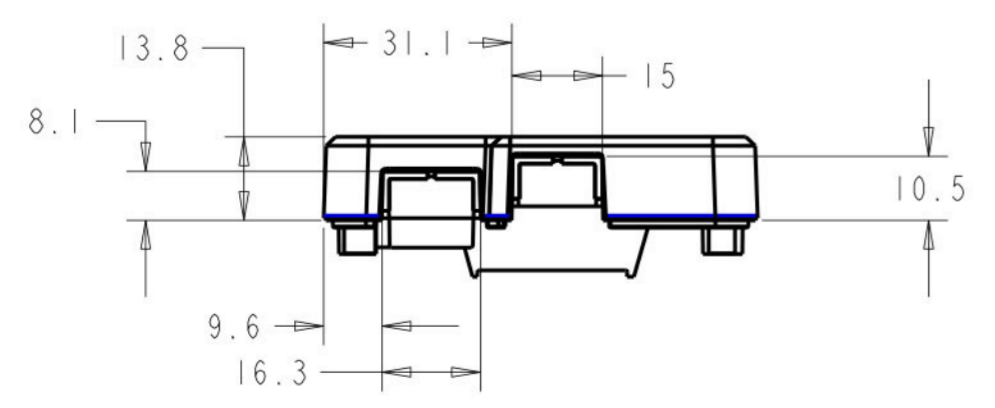
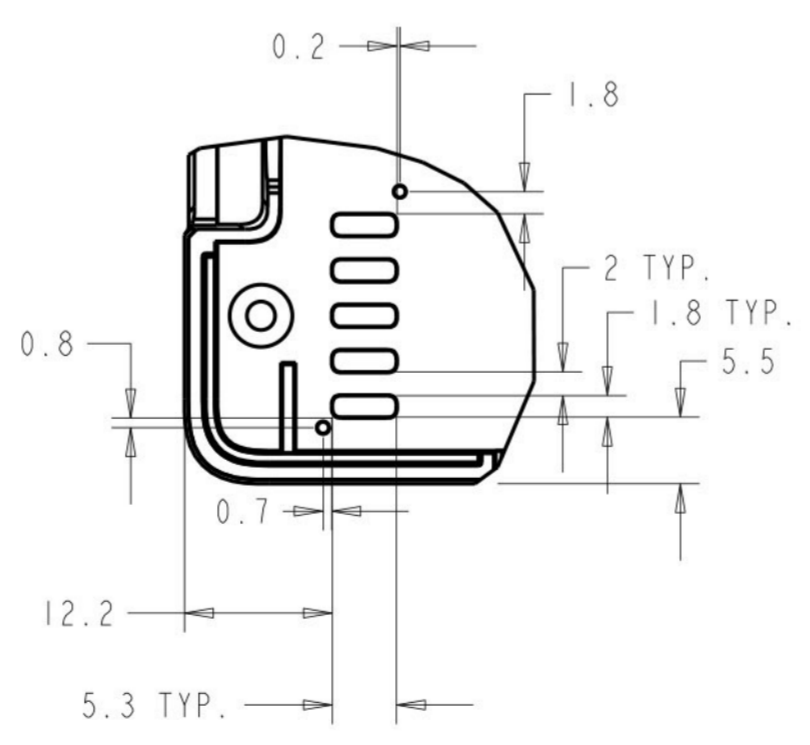
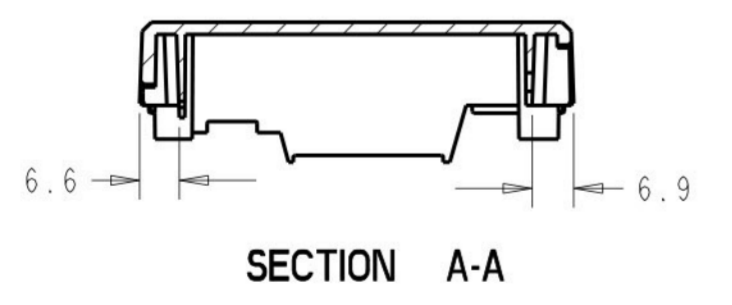
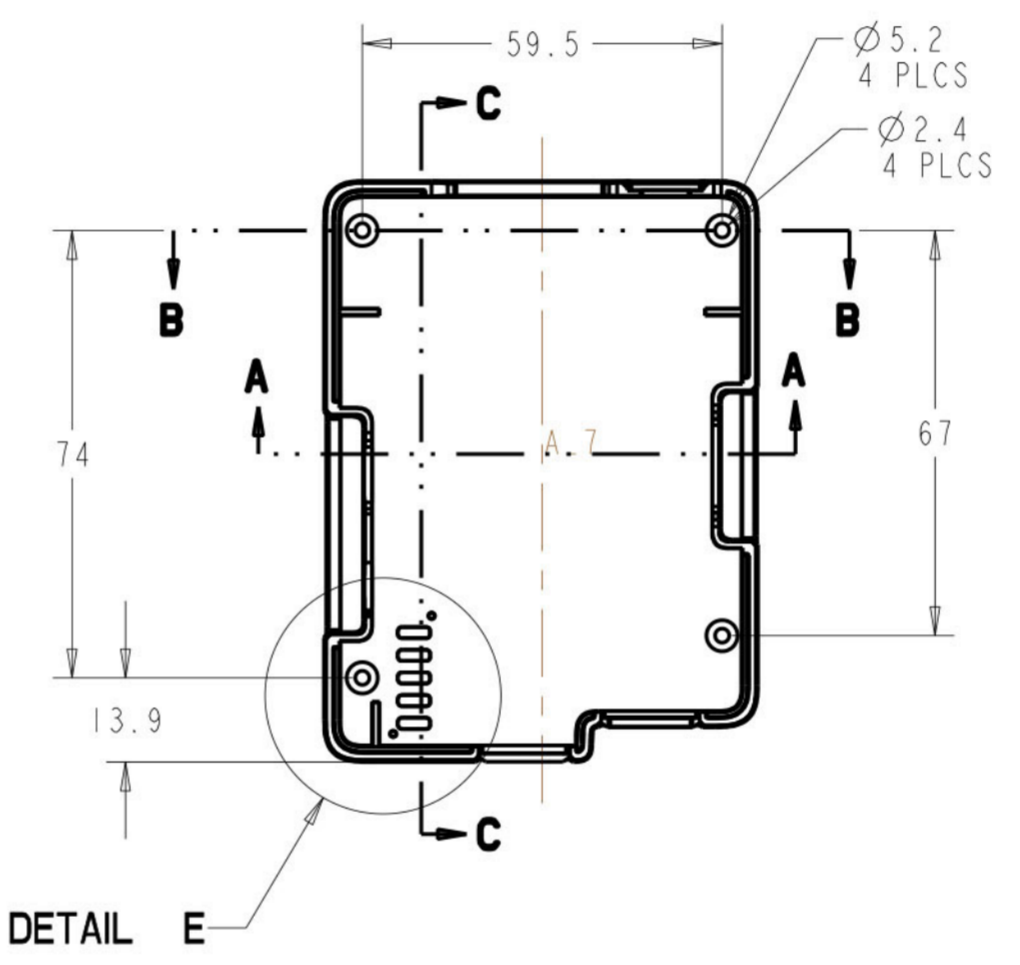
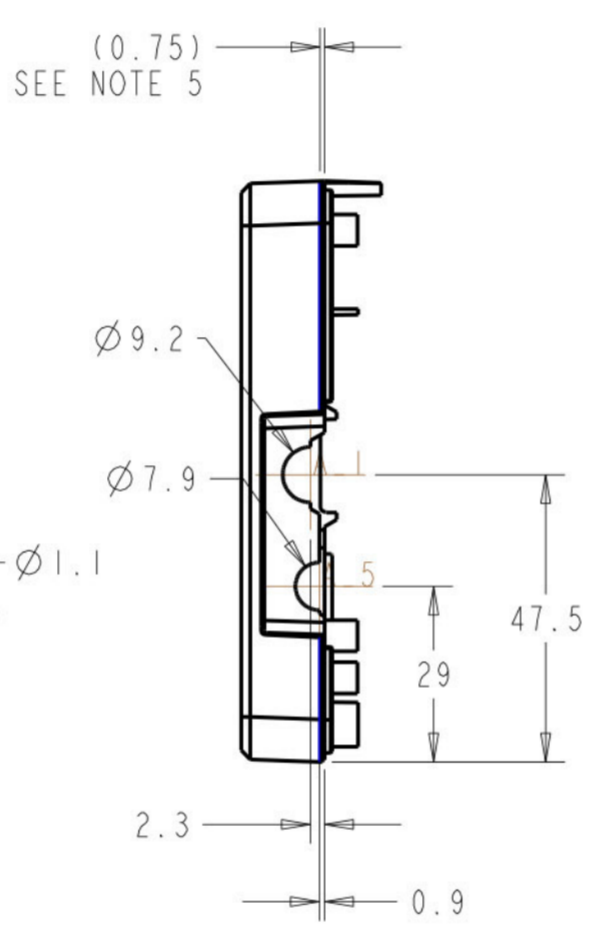
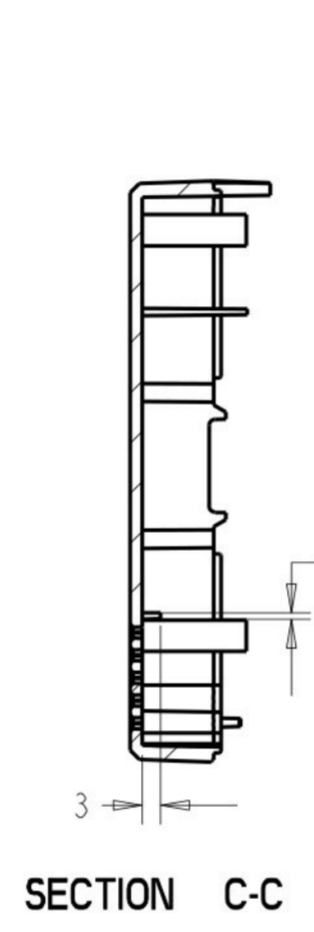
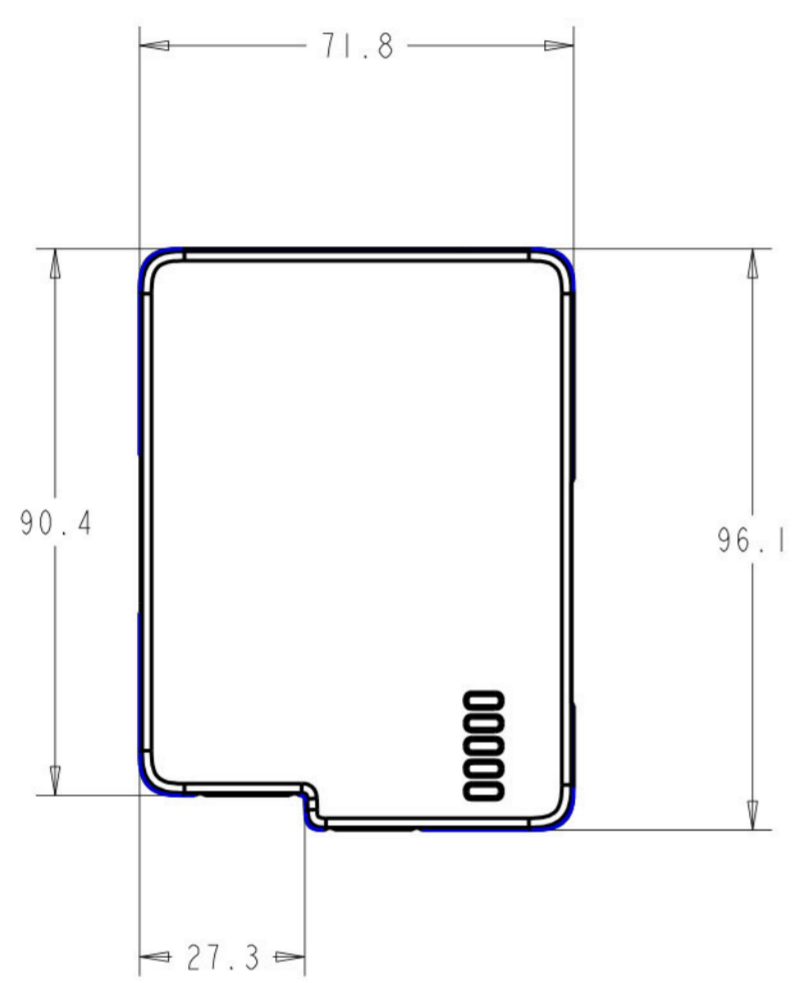
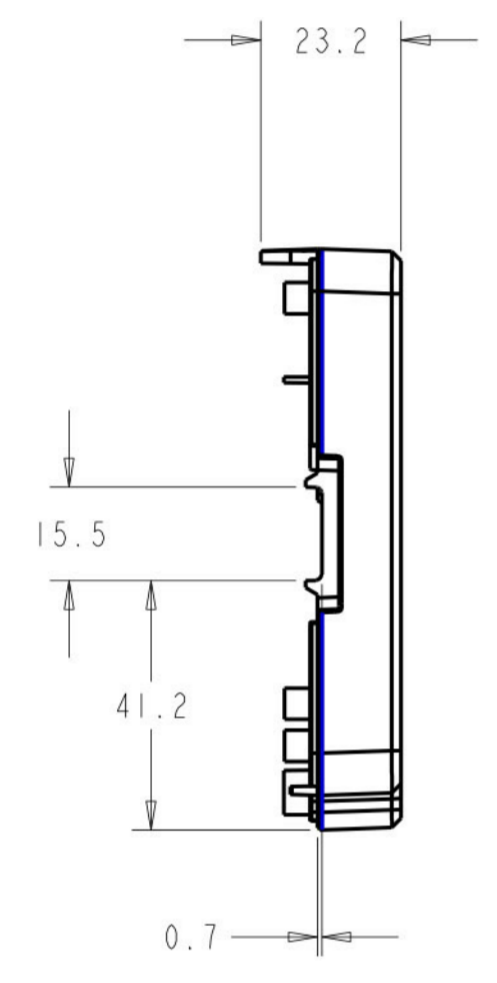
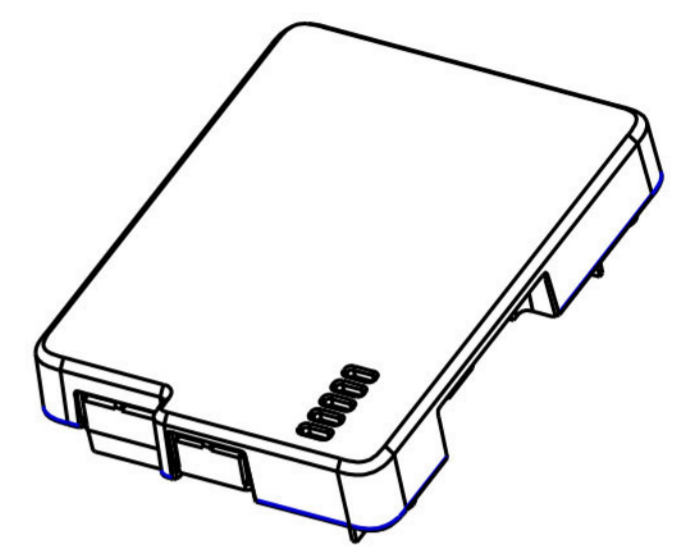
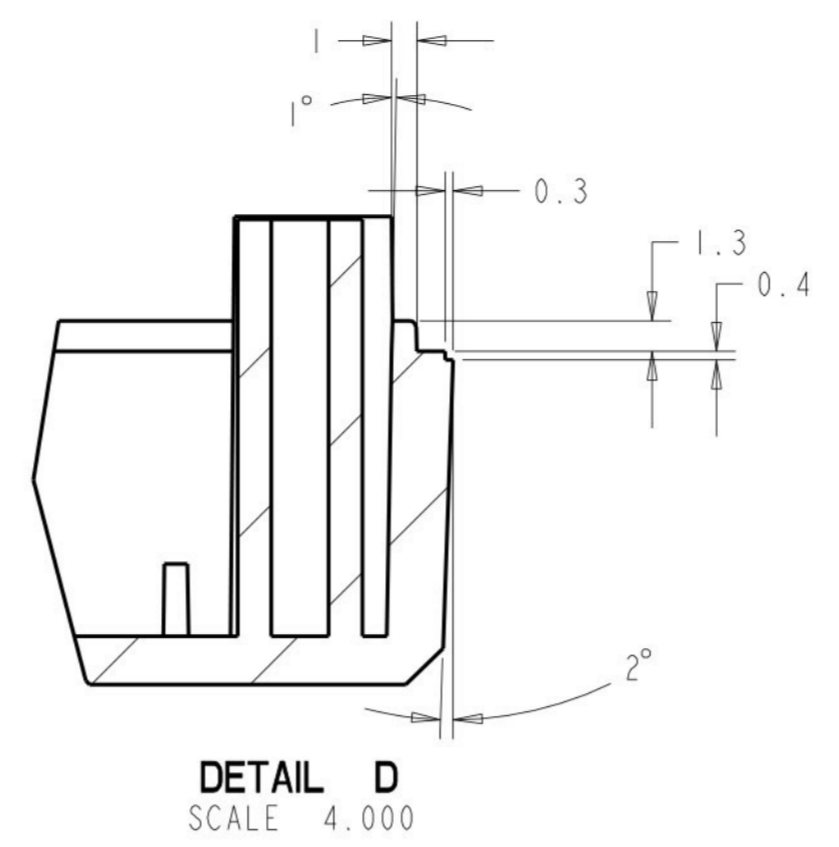
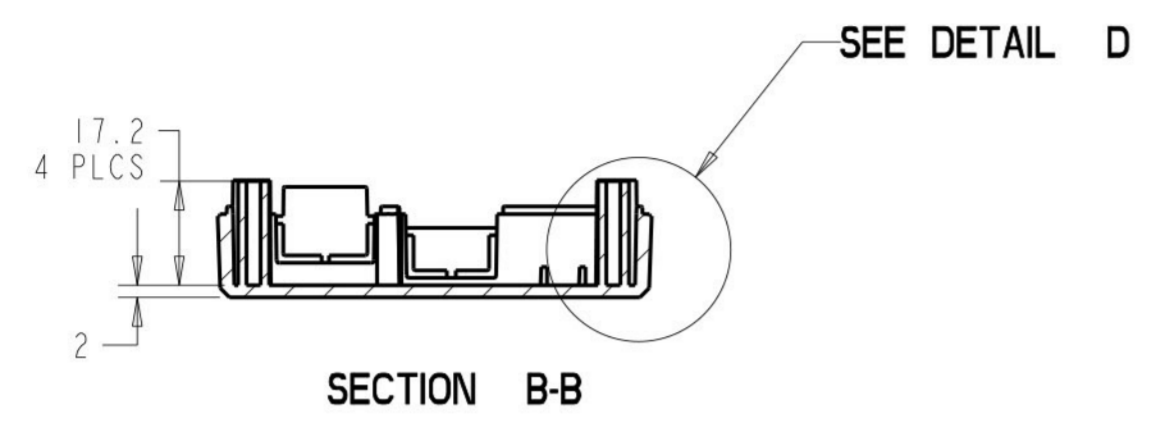
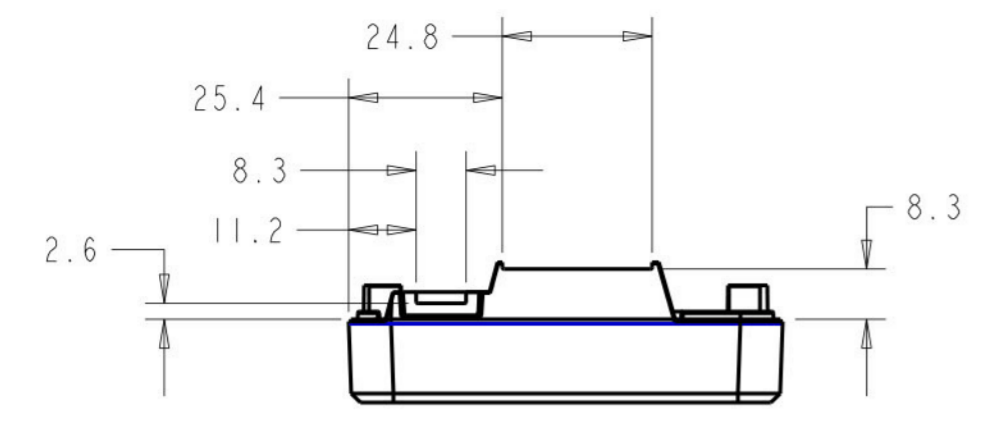
REVISIONS				
LET	ECN	DESCRIPTION	DATE	INT
01		RELEASE FOR REVIEW	07/17/12	TWS



- NOTES:
- UNSPECIFIED DIMS REFER TO 3D FILES.
 - TOOL DESIGN AND LOCATION OF PARTING LINE, GATES, AND EJECTOR PINS TO BE APPROVED BY PacTec ENGINEER BEFORE TOOLING START.
 - ALL DIMS MUST BE INSPECTED BY SUPPLIER FOR FIRST ARTICLE SAMPLE. CIRCLED DIMS ARE CRITICAL DIMS, MUST BE INSPECTED EVERY SHIPMENT.
 - ALL PART SURFACES MUST BE FREE OF SINK MARKS, TOOLING MARKS, AND OBVIOUS WELD LINES, ETC. OR MEET GOLDEN SAMPLE APPROVED BY PacTec ENGINEER.
 - SURFACE FINISH:
EXTERNAL SURFACES: EDM #33 WITH POLISHED AREA .75mm FROM PARTING LINE
INTERNAL SURFACES: SPI-SPE #3

DRAWN: [] NAME [] DATE []		RASPBERY PI BOTTOM COVER	
CHECK: []		PROCESS: CUSTOM	SCALE: 1:1
APPROVE: []		MATERIAL: SEE PARTS LIST	SHEET 1 OF 1
MOLDED TOLERANCE: PRODUCT WILL BE PRODUCED PER SPI-SPE INSTITUTE PRODUCT STANDARDS AND TOLERANCES		PART # 115764-01	DRAWING NUMBER 115764
MATERIAL: SEE PARTS LIST		REV 01	
CLASS: SEE PARTS LIST			

REVISIONS				
LET	ECN	DESCRIPTION	DATE	INT
01		RELEASE FOR REVIEW	07/17/12	TWS



DETAIL E
SCALE 2.000

- NOTES:
- UNSPECIFIED DIMS REFER TO 3D FILES.
 - TOOL DESIGN AND LOCATION OF PARTING LINE, GATES, AND EJECTOR PINS TO BE APPROVED BY PacTec ENGINEER BEFORE TOOLING START.
 - ALL DIMS MUST BE INSPECTED BY SUPPLIER FOR FIRST ARTICLE SAMPLE. CIRCLED DIMS ARE CRITICAL DIMS, MUST BE INSPECTED EVERY SHIPMENT.
 - ALL PART SURFACES MUST BE FREE OF SINK MARKS, TOOLING MARKS, AND OBVIOUS WELD LINES, ETC. OR MEET GOLDEN SAMPLE APPROVED BY PacTec ENGINEER.
 - SURFACE FINISH:
EXTERNAL SURFACES: EDM #33 WITH POLISHED AREA .75mm FROM PARTING LINE
INTERNAL SURFACES: SPI-SPE #3

DRAWN: NAME DATE		RASPBERRY PI TOP COVER	
CHECK: 07/17/12		PROCESS: CUSTOM	SCALE: 1:1
APPROVE:		MATERIAL: SEE PARTS LIST	SHEET 1 OF 1
MOLDING TOLERANCE: PRODUCT WILL BE PRODUCED PER SPI-SPE INSTITUTE PRODUCT STANDARDS AND TOLERANCES		PART # 115764-01	DRAWING NUMBER 115764
MATERIAL: SEE PARTS LIST		REV 01	
CLASS: SEE PARTS LIST			