

FRI/6A FILTRO INTERNO DE 6A



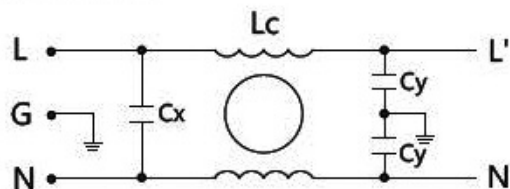
Datos Técnicos

Rated voltage	125/250 VAC
Rated current	6A @ 40° C
Rated frequency	50/60 Hz
Test voltage	/
Insulation resistance	L-N: 1.450 VDC L/N-G: 1.800 VAC
Leakage current	<0,8mA @ 250 VAC/50Hz
Climatic category	25/085/21

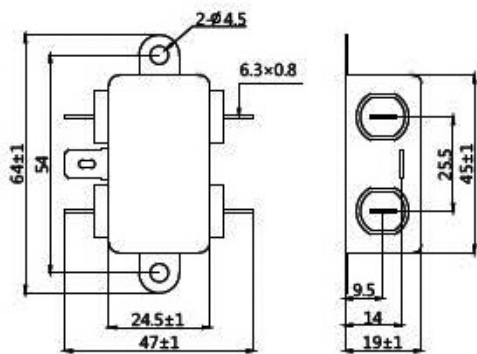
Parámetros eléctricos

Component name	Rating @ 20° ±5C	Quantity
Inductance (Lc)	>0,7 mH	1PC
X-Capacitor	0,1µF ±20%	1PC
Y-Capacitor	3.300 pF ±20%	2PCS

Electrical Schematics:

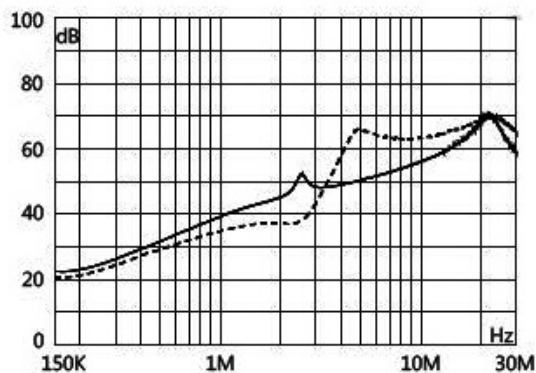


Dimensions:



TOLERANCE: ±0.5; UNIT: mm

Insertion Loss:



It is tested on empty load and 50Ω (— common mode — differential mode)

