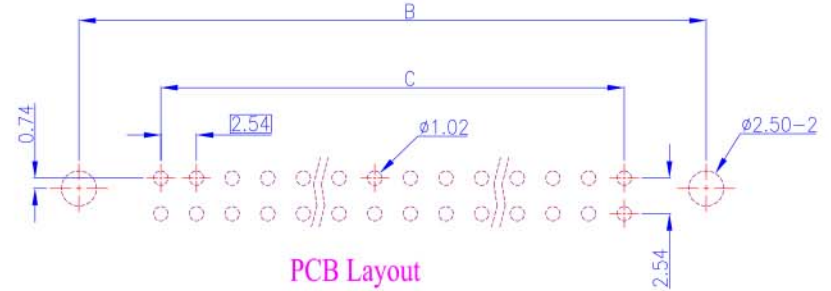
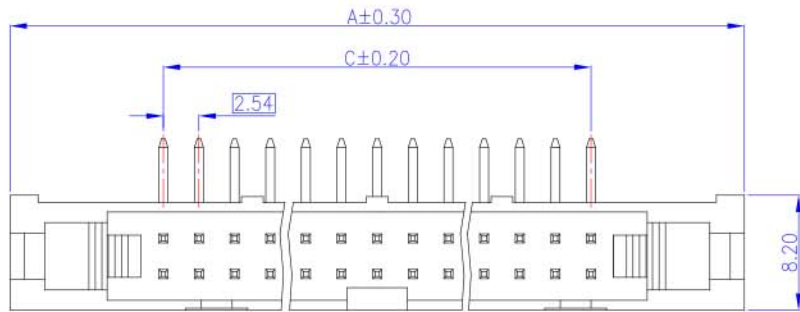
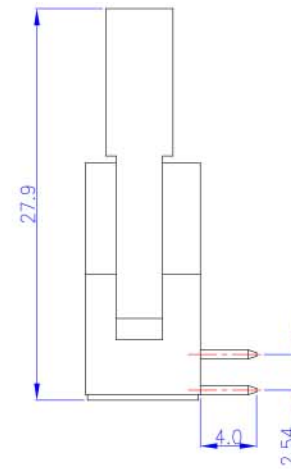
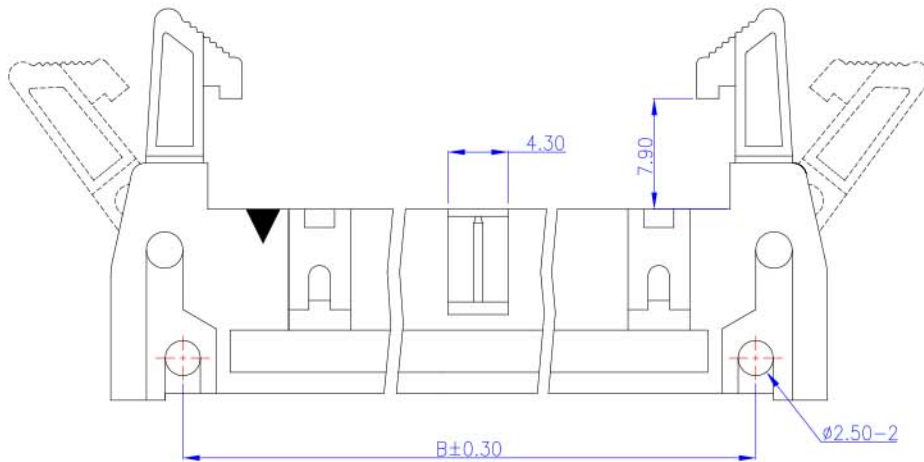


Rev.	Date	Description
A	2004/12/14	New Drawing
B	2005/04/25	Modify Drawing
C	2006/06/20	Modify Drawing
D	2006/09/08	Modify Drawing



PCB Layout
(Top View)



Order Information	Dimensions			
	Pos.	A	B	C
2206012-00205	10	32.00	21.84	10.16
2206012-00206	12	34.54	24.38	12.70
2206012-00207	14	37.08	26.92	15.24
2206012-00208	16	39.62	29.46	17.78
2206012-00210	20	44.70	34.54	22.86
2206012-00212	24	49.78	39.62	27.94
2206012-00213	26	52.32	42.16	30.48
2206012-00215	30	57.40	47.24	35.56
2206012-00217	34	62.48	52.32	40.64
2206012-00220	40	70.10	59.94	48.26
2206012-00225	50	82.80	72.64	60.96

Material and Finish

- Housing: PBT (UL94V-0), Black.
- Terminal: Sq. 0.64mm Copper Alloy, Gold Plating.

Electrical Characteristics

- Current Rating: 3.0 Amp. Max.
- Dielectric Withstand Voltage: 1000V AC RMS for 60Seconds.
- Insulation Resistance: 1000M Ohms Min. at 1000V DC.

Mechanical Characteristics

- Operating Temperature: -55°C ~ +105°C

Tolerance	Scale	Unit	Drawn By	Checked By	Approval By
0.0 ±0.30	1:1	mm			
0.00 ±0.20					
0.000 ±0.10					
Drawing No. HD2206012					

Title
2.54mm Box Header Ejector Type
PCB Mount Right Angle
With Latch