



preci-dip

SOCKET FOR PLASTIC LEADED CHIP CARRIER, SOLDER PIN, SERIES 540-88-XXX-24-008

1 SCOPE

This specification covers sockets for IC's packaged in square or rectangular plastic leaded chip carriers acc. to JEDEC type A, with J-formed leads on 1.27mm (0.5") centers. The sockets are equipped with stamped and formed contacts with through-hole solder pins arranged on 2.54 mm grid.

2 GENERAL CHARACTERISTICS

- Operating temperature range: -55 ... +125 °C
- Operating humidity range: annual mean 75 %
- Climatic category (IEC): 55/125/21
- Max working current (1 terminal): 1 A
- Max working voltage: 100 V_{RMS}/150 V_{DC}

3 PHYSICAL CHARACTERISTICS

- Contact : Phosphor bronze, plated 3.8µm pure tin over nickel (RoHS compliant)
- Insulator : Glass-filled, thermoplastic PPS, self-extinguishing acc. to UL 94 V-0

4 MECHANICAL CHARACTERISTICS

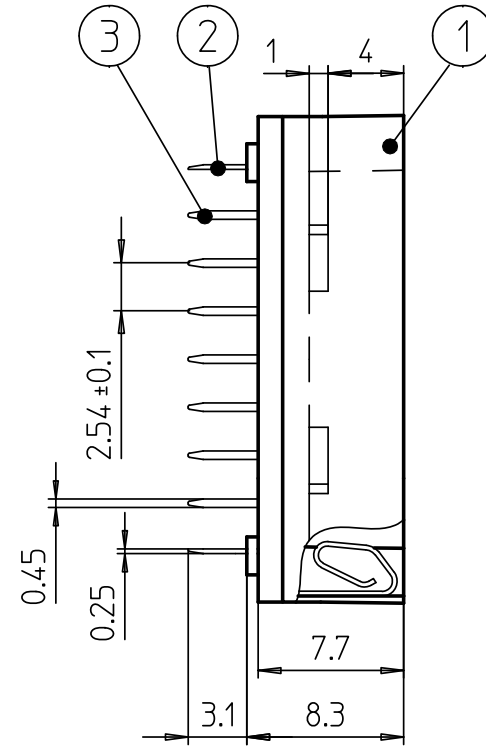
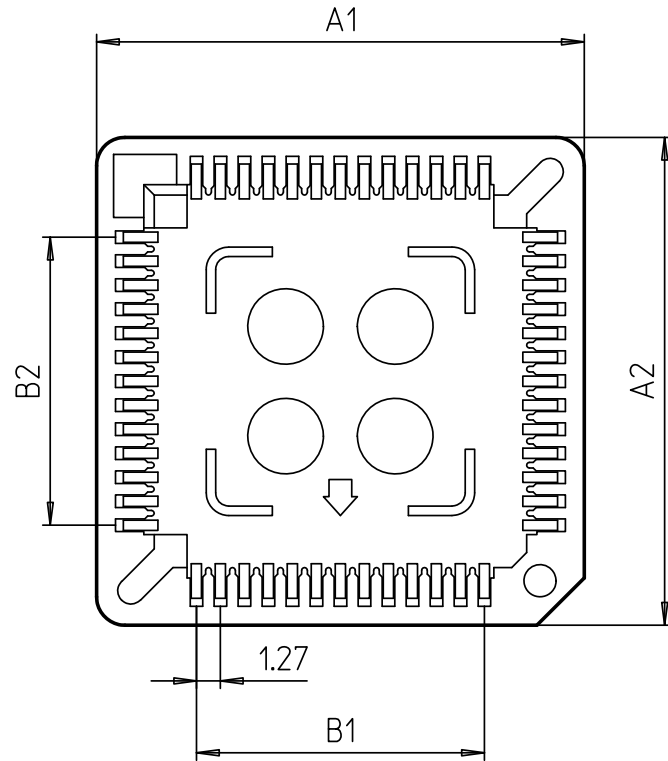
- Mechanical life: min 25 cycles

5 ELECTRICAL CHARACTERISTICS

- Contact resistance: max 30 mΩ
- Insulation resistance: min 1000MΩ at 100 V_{AC} (between any two adjacent contacts)
- Dielectric withstanding voltage: min 500 V_{RMS} (between any two adjacent contacts)
- Capacitance: max 1 pF at 1 kHz

6 ENVIRONMENTAL CHARACTERISTICS

- Solderability: 245 °C, 5 s,
acc. to J-STD-002, Test A, solder alloy SnAg3.8Cu0.7
- Resistance to soldering heat: 260 °C, 20 s,
acc. to J-STD-020C



3	Contact	X	Sn / Ni
2	Contact	X	Sn / Ni
1	Isolant PPS	1	.
Pos.	Spécifications	Nombre	Traitement de surface

Modifications: .	.	Remplace: .
.	.	Remplacé par: .

PLCC SOCKET	Echelle	Dessiné	23.06.2008	P.Schwob
	2.5:1	Contrôlé		

 precipip swiss world connects	N° de pièce		Révision
	C-540-88-XXX-24-008		.

XXX	Nbr of pins	A1	A2	B1	B2
028	28	18.10	18.10	7.62	7.62
032	32	18.10	20.60	7.62	10.16
044	44	23.20	23.20	12.7	12.7
052	52	25.80	25.80	15.24	15.24
068	68	30.80	30.80	20.32	20.32
084	84	35.90	35.90	25.4	25.4