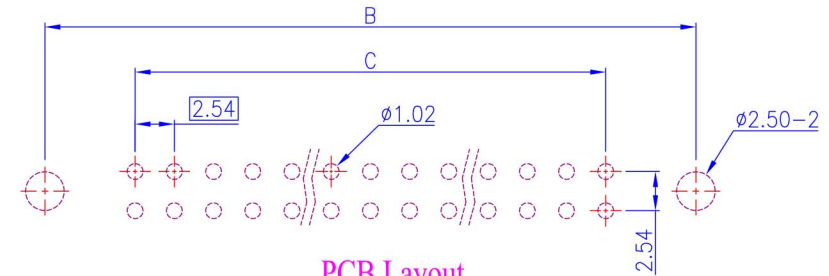
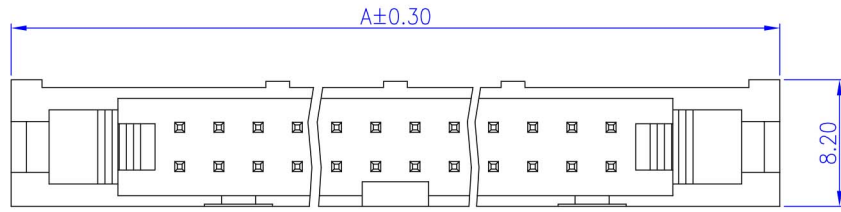


Rev.	Date	Description	Rev.	Date	Description
E	2011/06/27	Add Terminal Plating	A	2004/12/14	New Drawing
F	2013/05/23	Modify Drawing	B	2005/04/14	Modify Drawing
G	2014/10/28	Add Color Options	C	2006/06/26	Modify Drawing
			D	2009/05/26	Modify Drawing



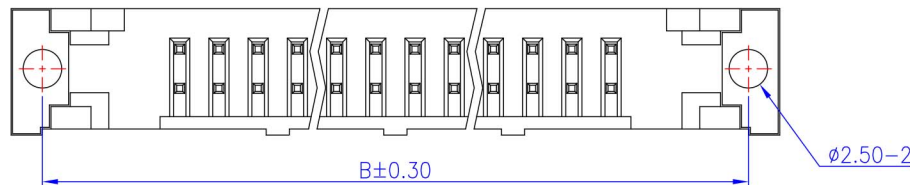
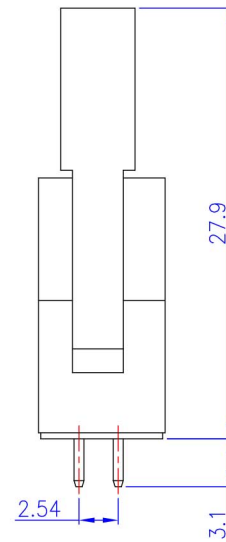
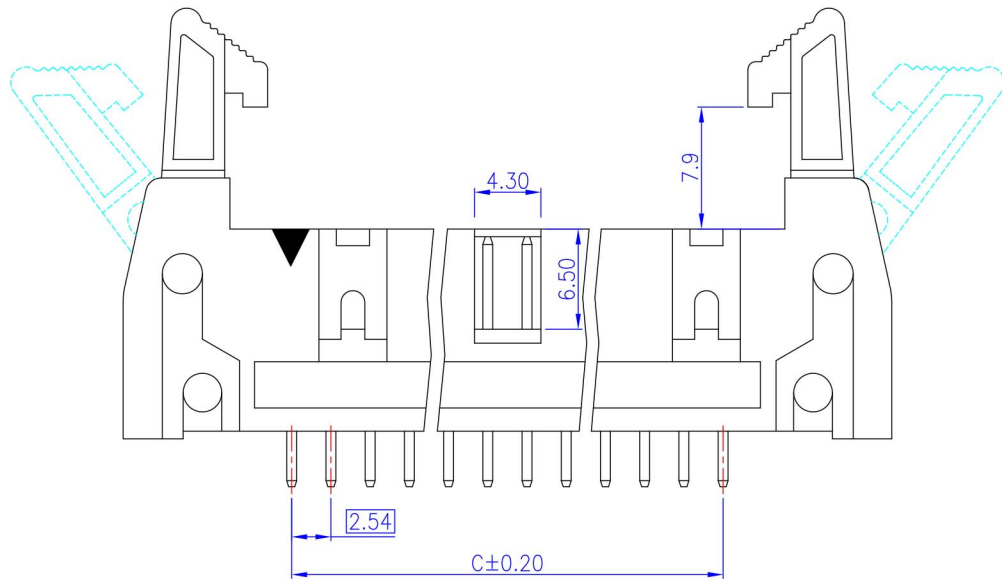
PCB Layout  
(Top View)

### Order Information

2203012- \*\* 2 \*\* \*

Terminal Plating  
 00: Gold Flash  
 10: 3u" Gold  
 30: 10u" Gold  
 40: 15u" Gold  
 80: 1u" Gold

Color Options  
 Blank: Black  
 G: Gray  
 No. of Pos. Per Row



Dimensions							
Pos.	A	B	C	Pos.	A	B	C
10	32.00	27.94	10.16	26	52.32	48.26	30.48
12	34.54	30.48	12.70	30	57.40	53.34	35.56
14	37.08	33.02	15.24	34	62.48	58.42	40.64
16	39.62	35.56	17.78	40	70.10	66.04	48.26
20	44.70	40.64	22.86	50	82.80	78.74	60.96
24	49.78	45.72	27.94				

#### Material and Finish

- Housing: PBT (UL94V-0).
- Terminal: Sq. 0.64mm Brass, Gold Plating.

#### Electrical Characteristics

- Current Rating: 3.0 Amp. Max.
- Dielectric Withstand Voltage: 1000V AC RMS for 60Seconds.
- Insulation Resistance: 1000M Ohms Min. at 1000V DC.

#### Mechanical Characteristics

- Operating Temperature: -55°C ~ +105°C

Tolerance	Scale	Unit	Drawn By	Checked By	Approved By
0.0 ±0.30 0.00 ±0.20 0.000 ±0.10	1:1	mm			
Drawing No. HD2203012					

Title  
 2.54mm Box Header Ejector Type  
 PCB Mount Vertical  
 With Latch