

for Draw No.: *HD2304-101, HD2304-201, HD2304-301*

Code	A	B	C	D	Date	Note	Code	A	B	C	D	Date	Note
01	6.00	3.00	4.04	2.54	Dec. 28, 2004		26	12.00	3.00	6.00	2.54	Mar. 09, 2007	Reverse Housing
02	6.00	3.00	6.00	2.54	Dec. 28, 2004	Reverse Housing	27	7.00	3.50	4.06	2.54	May 10, 2007	
03	4.50	3.00	4.48	2.54	Dec. 28, 2004	Reverse Housing	28	7.90	2.90	6.00	2.54	May 15, 2007	Reverse Housing
04	6.00	2.88	3.94	2.54	Dec. 28, 2004		29	6.00	3.00	4.52	2.54	Aug. 07, 2007	Reverse Housing
05	5.73	3.50	6.20	2.54	Dec. 28, 2004	Reverse Housing	30	6.00	3.00	3.90	2.54	Dec. 26, 2007	
06	7.00	9.00	4.04	2.54	Dec. 28, 2004		31	3.50	3.00	4.04	2.54	Dec. 26, 2007	
07	7.00	4.00	4.04	2.54	Dec. 28, 2004		32	6.00	3.00	6.20	2.54	Dec. 26, 2007	Reverse Housing
08	3.00	3.00	4.04	2.54	Dec. 28, 2004		33	7.00	3.80	3.68	2.54	May. 06, 2008	
09	6.00	3.00	4.80	2.54	Dec. 28, 2004	Reverse Housing	34	4.00	3.00	2.98	2.54	Jul. 11, 2008	Reverse Housing
10	6.90	3.50	3.66	2.54	Mar. 08, 2005	Reverse Housing	35	3.90	3.40	3.45	2.54	Jul. 22, 2008	
11	4.00	3.40	4.22	2.54	Jan. 31, 2008	Rev. B	36	6.00	3.20	4.40	2.54	Oct. 31, 2008	
12	6.00	2.90	3.62	2.54	Mar. 08, 2005		37	7.00	3.00	6.54	2.54	Dec. 25, 2008	
13	Refer to Drawing No. 230413				Jun. 29, 2005		38						
14	6.20	3.00	5.50	2.54	Apr. 21, 2006		39						
15	6.10	3.10	3.90	2.54	Apr. 21, 2006		40						
16	4.80	3.30	3.90	2.54	Jul. 17, 2006		41						
17	6.00	3.50	4.06	2.54	Sep. 05, 2006		42						
18	6.00	3.00	6.24	2.54	Sep. 27, 2006	Reverse Housing	43						
19	3.30	3.10	6.58	2.54	Nov. 20, 2006		44						
20	3.00	7.00	4.04	2.54	Nov. 23, 2006		45						
21	6.00	3.10	6.00	2.54	Nov. 05, 2006		46						
22	6.00	10.00	4.04	2.54	Dec. 05, 2006		47						
23	6.00	3.00	4.04	2.54	Feb. 09, 2007	Reverse Housing	48						
24	3.00	6.00	6.04	2.54	Feb. 13, 2007		49						
25	5.84	3.00	4.04	2.54	Feb. 14, 2007		50						

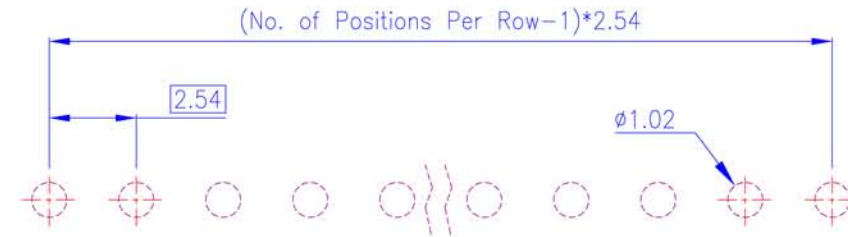
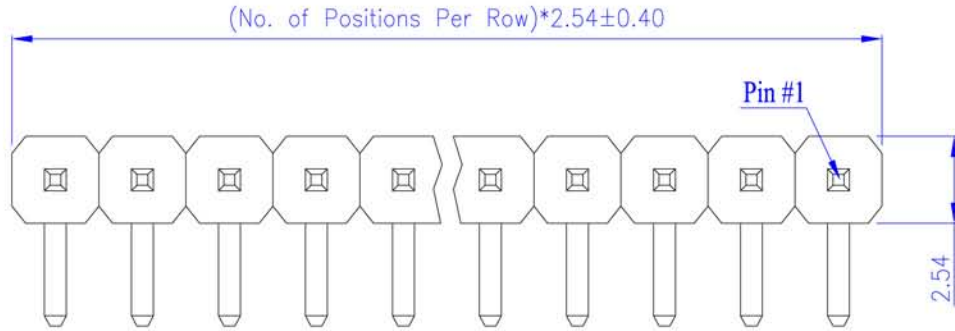
Material and Finish

Electrical Characteristics

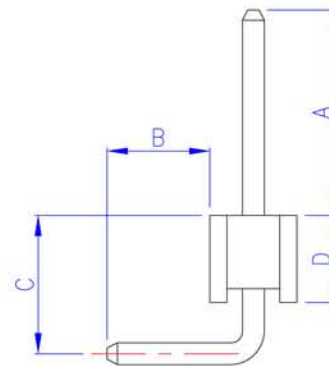
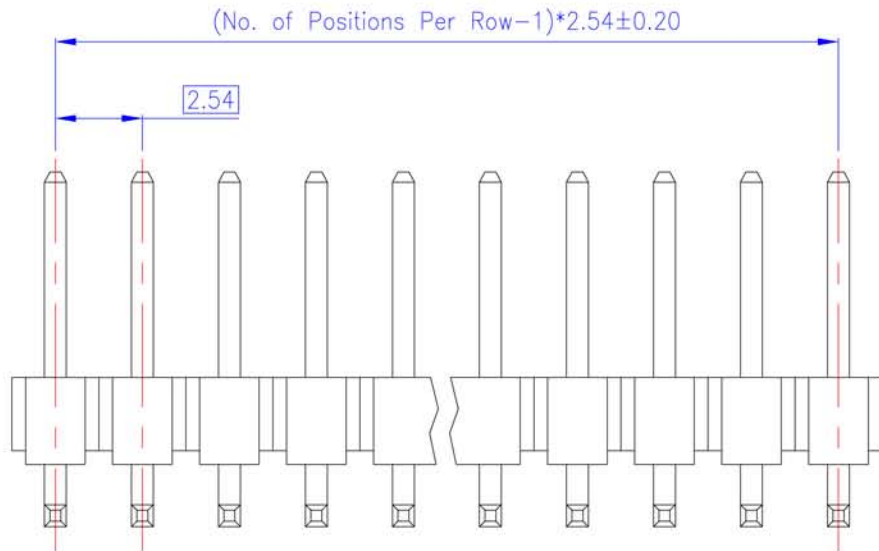
Mechanical Characteristics

Tolerance	Scale	Unit	Drawn By	Checked By	Approved By
0.0 ±0.30	1:1	mm	<i>ASD</i>	<i>Anila</i>	<i>Alex</i>
0.00 ±0.20					
0.000 ±0.10					
Drawing No.			HD2304-001		
Title					
Length Options					
2.54mm Post Header					
PCB Mount Right Angle					

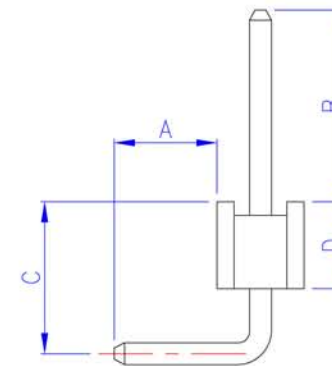
Rev.	Date	Description
A	2004/12/23	New Drawing
B	2006/11/13	Modify Drawing
C	2007/03/19	Modify Drawing
D	2007/04/13	Modify P/N



PCB Layout
(Top View)



Standard Housing



Reverse Housing

Order Information

2304 ** * - ** 1 **

Length Options _____
(Ref. Draw No. HD2304-001)

Housing Option _____
H : Nylon 6T
Blank : PBT

Terminal Plating Options _____
00: Gold Flash
30: 10u" Gold
40: 15u" Gold

No. of Positions Per Row _____

Material and Finish

- Housing: Thermoplastic (UL94V-0), Black.
- Terminal: Sq. 0.64mm Copper Alloy, Gold Plating.

Electrical Characteristics

- Current Rating: 3.0 Amp. Max..
- Dielectric Withstand Voltage:
1000V AC RMS for 60Seconds.
- Insulation Resistance:
1000M Ohms Min. at 1000V DC.

Mechanical Characteristics

- Operating Temperature: -55°C ~ +105°C

Tolerance	Scale	Unit	Drawn By	Checked By	Approved By
0.0 ±0.30	1:1	mm	<i>Sue</i>	<i>Vivi</i>	<i>Alex</i>
0.00 ±0.20	⊕	⊖	Drawing No. HD2304-101		
0.000 ±0.10					

Title
2.54mm Post Header
PCB Mount Right Angle Type
Single Row