

Double Arm Flat Screen Wall Mount with Tilt and Swivel



BT7515

Registered Design Number: 000389994-0003

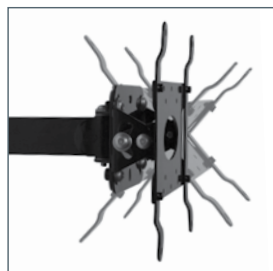


BT7515

Double Arm Flat Screen Wall Mount with Tilt and Swivel

Designed for medium flat screens
up to 42" (107cm) / 25kg (55lbs)

- Fits screens with VESA mounting patterns:
x 75mm, 100 x 100mm,
x 100mm and 200 x 200mm
- Tilt adjustment +/-40°
- Features three swivel points: 180° at wall,
360° at central pivot and 240° at interface
- **CLIPLOGIC™** cable management included
- Security screws and Allen key provided
for installation
- Simple installation with all mounting
hardware included
- Available in Black and Silver



Easy adjustment of tilt



CLIPLOGIC™ cable management



Space saving design - folds flat
to the wall



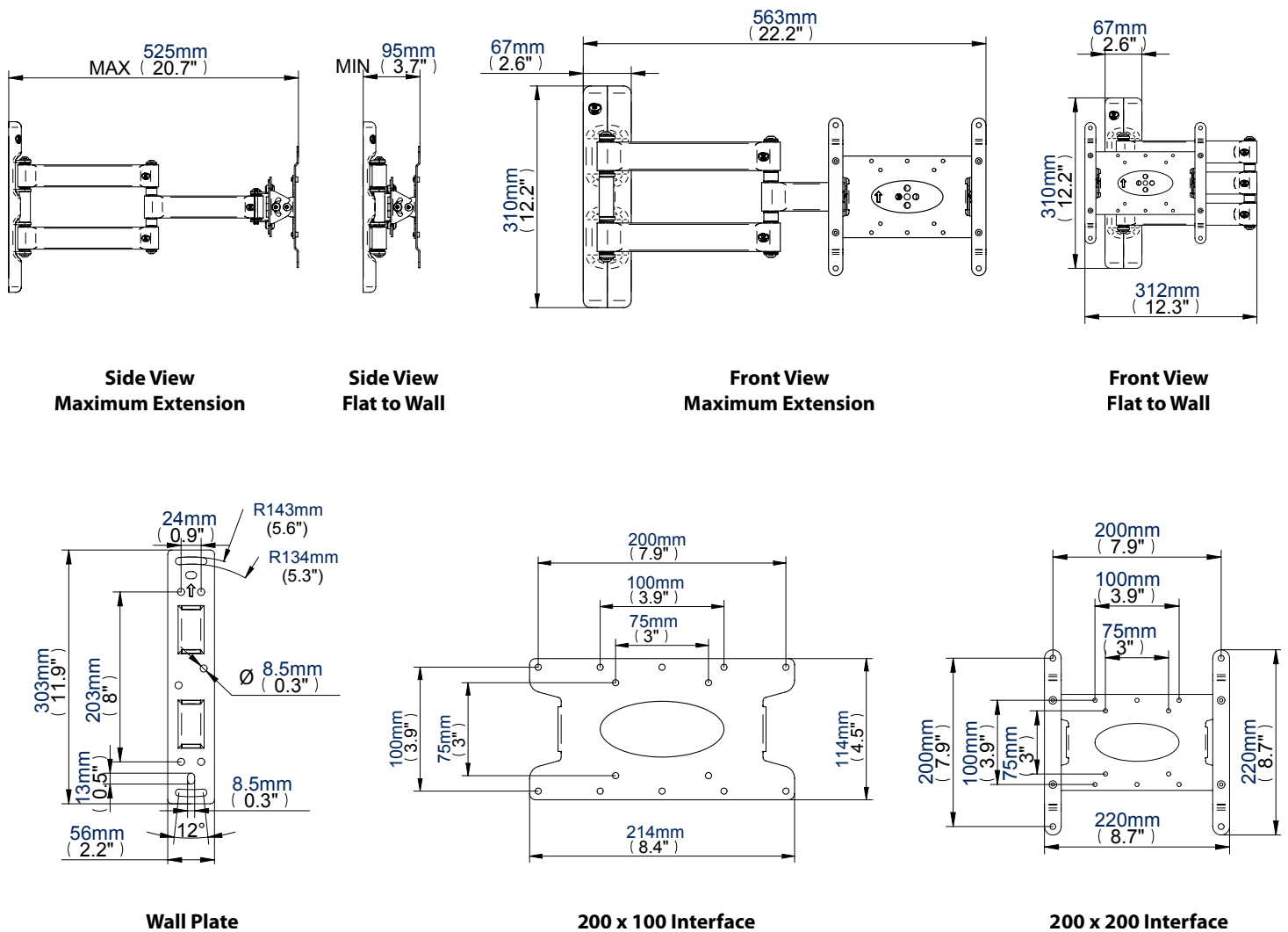
Security locking screws provided

Double Arm Flat Screen Wall Mount with Tilt and Swivel



BT7515

Registered Design Number: 000389994-0003



Colour:	Order Ref:	EAN Code:	Master Carton Qty:	Inner Carton Qty:	Master Carton Weight:	Master Carton Cube:
Piano Black	BT7515/PB	5019318750151	2	N/A	9.32kg (20.5lbs)	0.033cbm (1.15cuft)
Silver	BT7515/S	5019318750168	2	N/A	9.32kg (20.5lbs)	0.033cbm (1.15cuft)

**This information is intended as a guide only and reflects the current specification at the time of print.
B-Tech accepts no liability for the accuracy of the information contained in this document.**