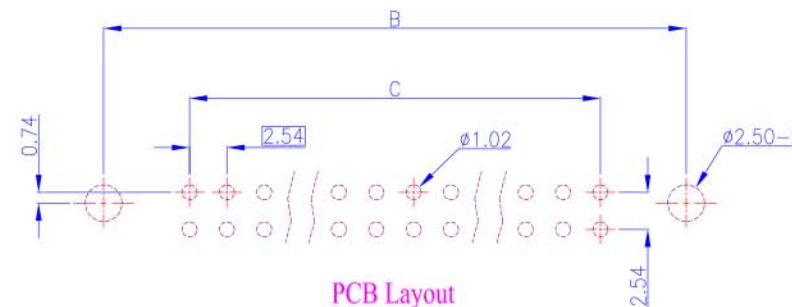
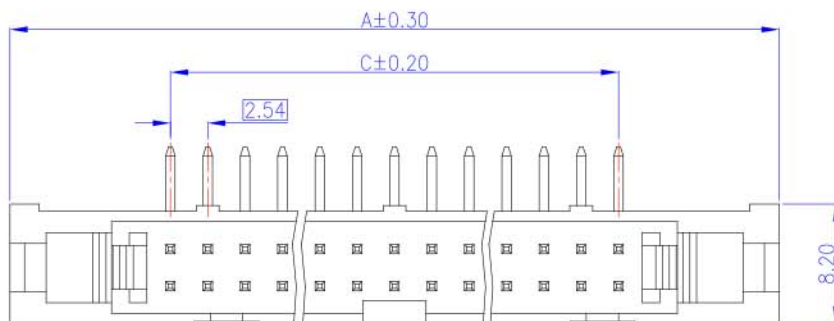
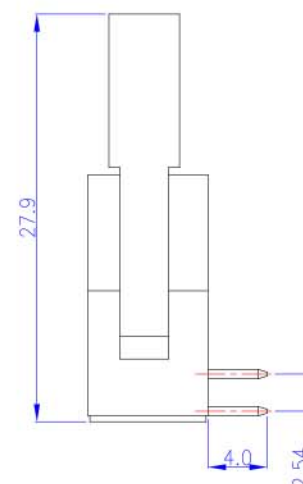
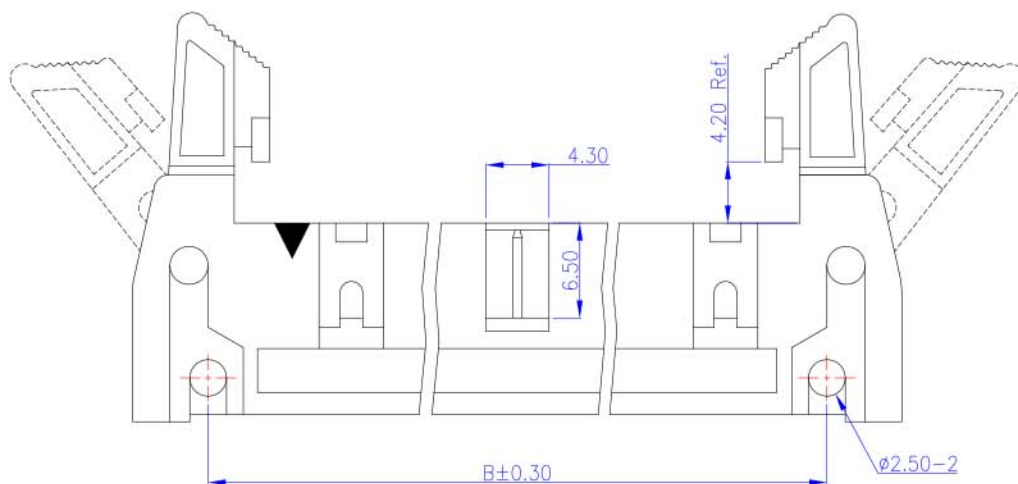


Rev.	Date	Description
A	2004/12/17	New Drawing
B	2005/04/25	Modify Drawing
C	2006/01/25	Modify Drawing
D	2006/05/09	Modify Drawing
E	2013/08/26	Modify Drawing



PCB Layout  
(Top View)



Order Information	Dimensions			
	Pos.	A	B	C
2206013-00205	10	32.00	21.84	10.16
2206013-00206	12	34.54	24.38	12.70
2206013-00207	14	37.08	26.92	15.24
2206013-00208	16	39.62	29.46	17.78
2206013-00210	20	44.70	34.54	22.86
2206013-00212	24	49.78	39.62	27.94
2206013-00213	26	52.32	42.16	30.48
2206013-00215	30	57.40	47.24	35.56
2206013-00217	34	62.48	52.32	40.64
2206013-00220	40	70.10	59.94	48.26
2206013-00225	50	82.80	72.64	60.96

**Material and Finish**

- Housing: PBT (UL94V-0), Black.
- Terminal: Sq. 0.64mm Copper Alloy, Gold Plating.

**Electrical Characteristics**

- Current Rating: 3.0 Amp. Max.
- Dielectric Withstand Voltage: 1000V AC RMS for 60Seconds.
- Insulation Resistance: 1000M Ohms Min. at 1000V DC.

**Mechanical Characteristics**

- Operating Temperature: -55°C ~ +105°C

Tolerance	Scale	Unit	Drawn By	Checked By	Approved By
0.0 ±0.30	1:1	mm			
0.00 ±0.20					
0.000 ±0.10					
Drawing No.			HD2206013		

2.54mm Box Header Ejector Type  
PCB Mount Right Angle  
With Short Latch