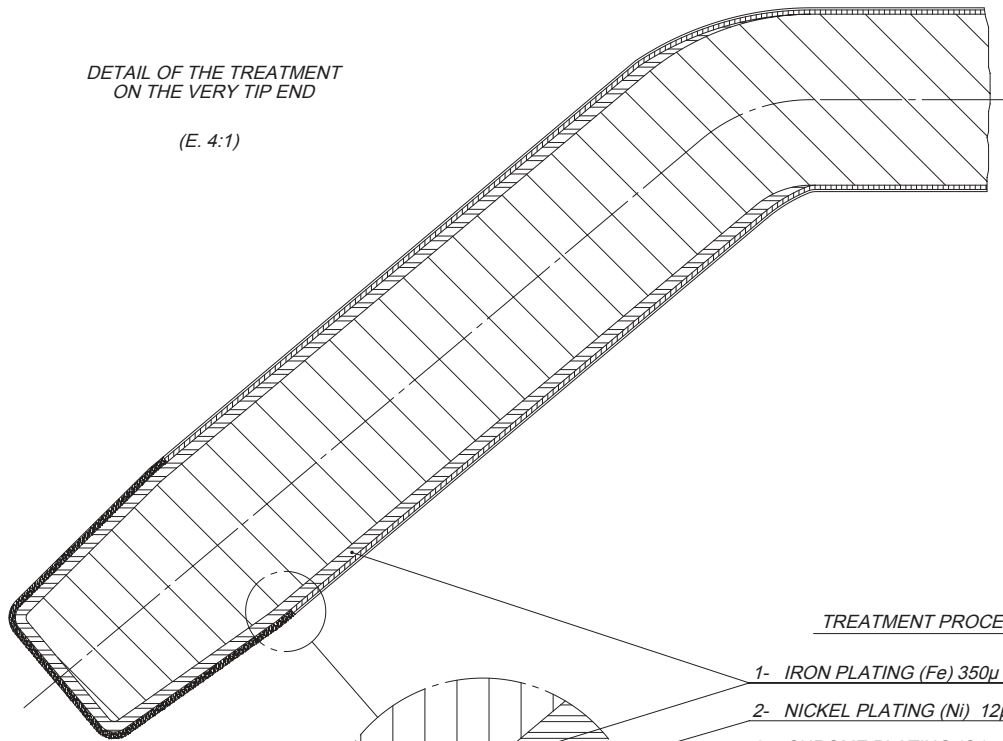
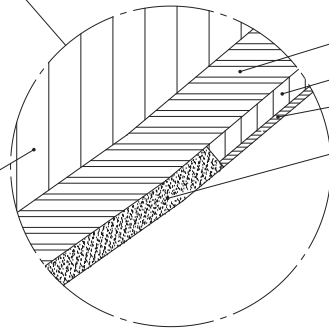


DETAIL OF THE TREATMENT ON THE VERY TIP END

(E. 4:1)



COPPER CORE



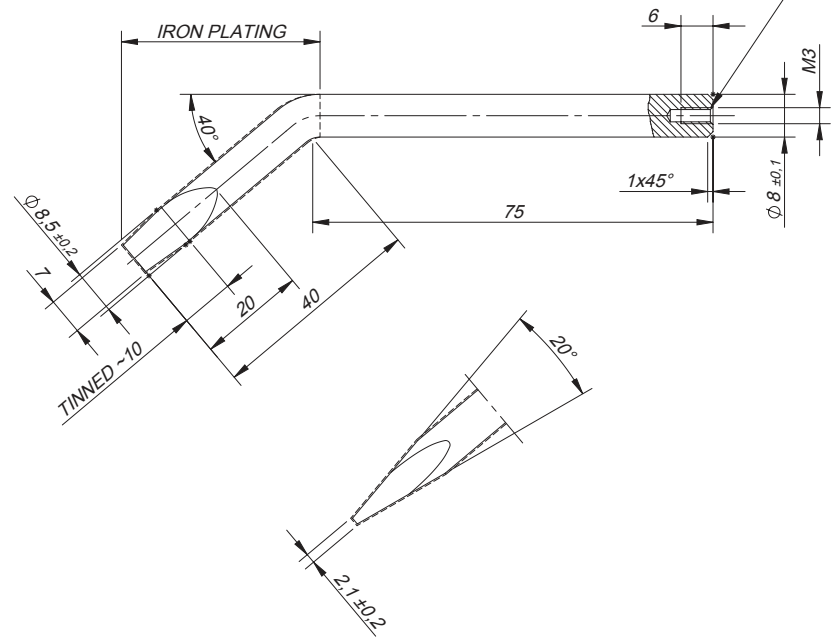
TREATMENT DETAIL

TREATMENT PROCESS

- 1- IRON PLATING (Fe) 350 μ \pm 50
- 2- NICKEL PLATING (Ni) 12 μ min.
- 3- CHROME PLATING (Cr) 3 μ min.
- 4- TIN PLATING (Sn) ~

TINNING WILL BE PERFORMED BY HOT IMMERSION IN LEAD-FREE SOLDER DIRECTLY ON TOP OF THE IRON PLATING

THREADED HOLE TO FIX THE TIP DURING TREATMENT



MATERIAL: PUNTA 80 S/TRATAR **0003866**

DESCRIP. ADICIONAL:	PUNTA TRATADA		DIBUJADO	DIMENSIONS WITHOUT TOLERANCES	
				HOLES H 13 AXLES h 13	ANGLES \pm 1° THREADS H/g 13
	ACTIVO DESDE: ACTIVE SINCE:	26/06/2013	HOJA TECNICA:	3997	
	SUSTITUYE A:	COMPATIBLE:	PAUTA VERIFIC:	2845	
PIEZA: PART:	80D PUNTA			E. 1:1	DIN A3
	PRODUCTO: PRODUCT:	0800409		N° PLANO: DRAWING N:	52347