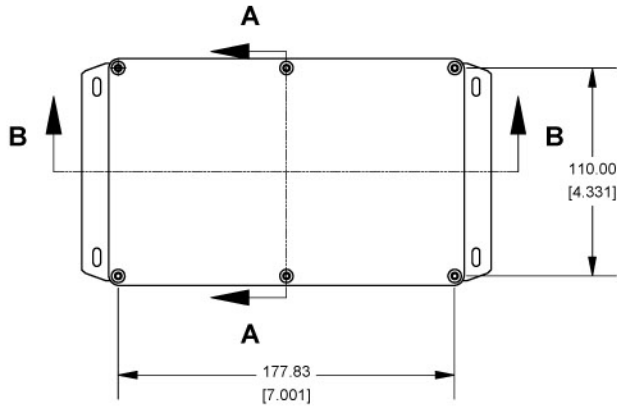
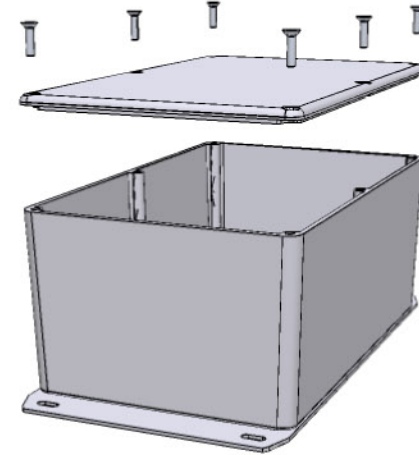
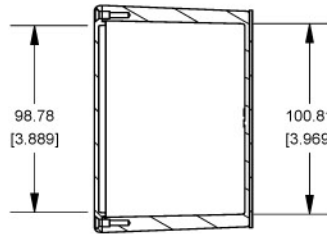


Top View of Assembly

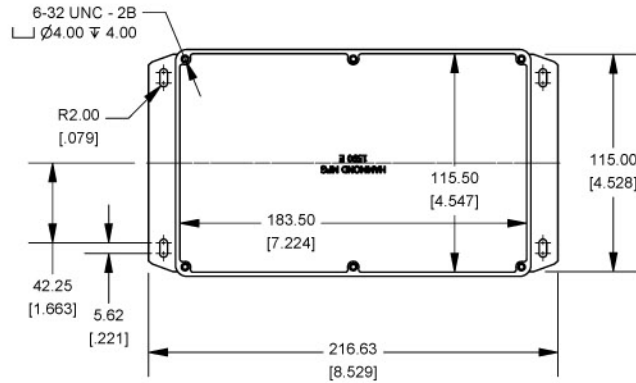
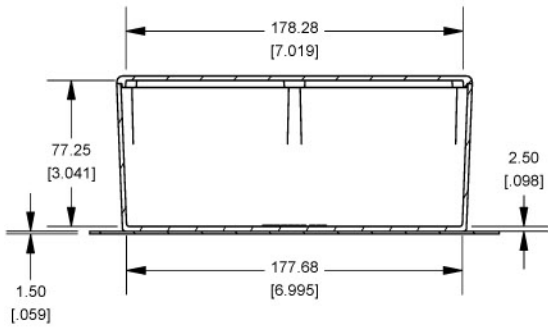


**SECTION A-A
End View of Assembly**



Top View Looking Inside Box

**SECTION B-B
Side View of Assembly**



Enclosures can be Factory Modified (Milling, Drilling, Printing etc.)
Contact Factory mjm@hammondmfg.com for quotes
Solid models of this enclosure available in STEP or IGES.

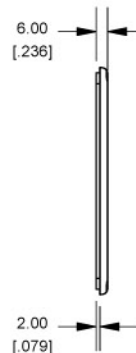
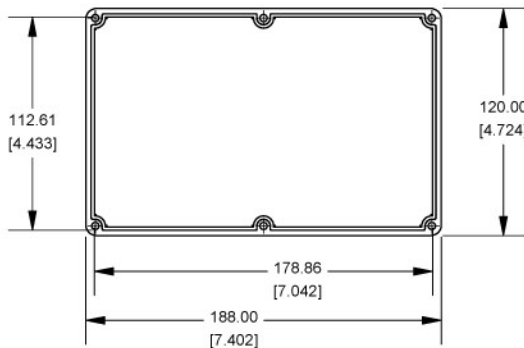
NOTE

Purchased assembly includes box, lid and 6 cover screws.
Box and lid are made from Diecast Aluminum Alloy (alloy type 380).
Silicone Gasket Loctite #5950
Bottom Flange is Welded

PART NUMBERS

1590EF Enclosure	
Unfinished	1590EF
Gray Textured Polyester Powder Paint - RAL 7038	1590EFGY
Black Textured Polyester Powder Paint - RAL 9011	1590EFBK
1590EF Liquid Resistant Enclosure (Silicone Factory Installed Gasket)	
Unfinished	1590WEP
Black Textured Powder Paint	1590WFBK
ACCESSORIES	
Recommended Torque: 75 oz.in / 55 cN.m	
Black Textured Cover Screws (Pig 50) [6-32 x 1/2" SS Type 304]	1590WMS100BK
Unfinished Cover Screws (Pig 100) [6-32 x 1/2" Nickel Plated Screws]	1590WMS100
Standard Cover Screws	
Unfinished Cover Screws (Pig 100) [6-32 x 1/2" Nickel Plated Screws]	1590MS100
Black Textured Cover Screws (Pig 50) [6-32 x 1/2" SS Type 304]	1590MS100BK

Lid



**HAMMOND
MANUFACTURING™**

1590EF

www.hammondmfg.com