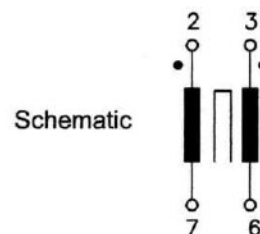
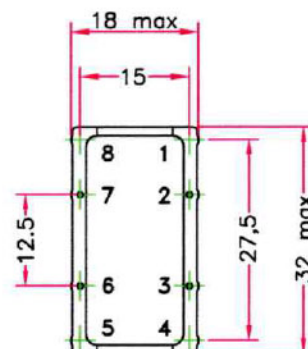
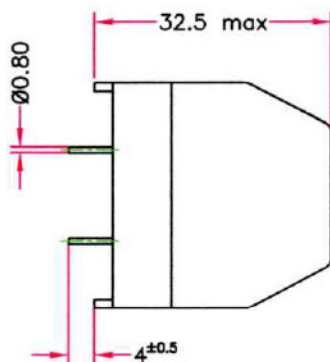
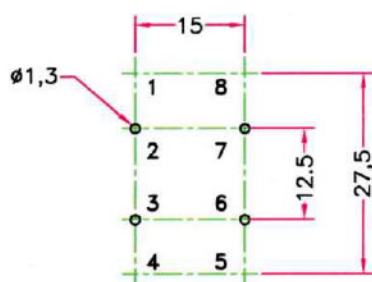


DATA SHEET

Viewed on component side



TECHNICAL DATA :

Core : toroid $\varnothing 25 / \varnothing 15 / H10$ μ i 6000 ferrite material or equivalent

Wire : $\varnothing 0.63$ grade 1 class F or equivalent

Rated current per winding : 4A referred to 250V – 50Hz and +60°C ambient temperature

Rated inductance per winding : 3.3mH +50% –30% at 10KHz ; 0.1mA

Test voltage between windings : 1500VAC – 50Hz , 2 sec

Climatic category : DING GKC (–40° to +125°C; humidity cat.C)

Case material : PBT at 30% fibreglass UL94–V0 or equivalent

RoHS compliance

Please, refer to general catalog for unspecified parameters

a	
IND	DATE

Radiohm Specification



Designation : 42V32 4000

Part number : _____

Date : 23/05/2014

Preliminary :

Final :

Customer Specification Approval

Part number : _____

Signature : _____

Name : _____

Title : _____

Date : _____